

IN THE UNITED STATES BANKRUPTCY COURT
FOR THE DISTRICT OF DELAWARE

In re:)	
)	Chapter 11
WELDED CONSTRUCTION, L.P., <i>et al.</i> , ¹)	
)	Case No. 18-12378 (KG)
)	
Debtors.)	(Jointly Administered)

**REQUEST FOR PAYMENT OF ADMINISTRATIVE EXPENSE CLAIM FOR THE PERIOD
FROM THE PETITION DATE THROUGH AND INCLUDING MARCH 31, 2019**

1. Name of claimant: Bleifus Tire Service, Inc.

2. Debtor that the claim is asserted against (check one):

- Welded Construction, L.P.
- Welded Construction Michigan, LLC

3. Nature and description of the claim (you may attach a separate summary):

Reimbursement For open invoices (4)

4. Date(s) claim arose: 8/22/18

5. Amount of claim: \$1329.88

6. Documentation supporting the claim must be attached hereto. Documentation should include both evidence of the nature of the Administrative Expense Claim asserted as well as evidence of the date or dates on which the Administrative Expense Claim arose.

Date: / /2019

Signature:

Name: Bleifus Tire Service, Inc.

RECEIVED

APR 01 2019

Address: 4274 National Road
Triadelphia, WV 26059

KURTZMAN CARSON CONSULTANTS

Phone Number: 304-547-5300

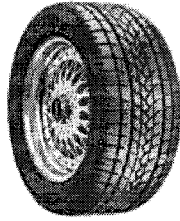
Email: audrey@bleifustire.com

¹ The Debtors in these chapter 11 cases, along with the last four digits of each Debtor's federal tax identification number, are: Welded Construction, L.P. (5008) and Welded Construction Michigan, LLC (9830). The mailing address for each of the Debtors is 26933 Eckel Road, Perrysburg, OH 43551.



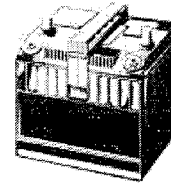
Bleifus Tire, Alignment, Brake & Battery

Goodyear
Firestone
General
Kumho



Over 10,000 tires in stock
New - Retread - Used
Passenger, Light Truck,
Farm & ATV

4274 National Road
Triadelphia, WV 26059-0081
Phone: (304) 547-5300 OR
(800) 254-5303
Fax: (304) 547-5323
bleifustire.com
Open Daily 8am-5:30pm,
Sat. till 2pm
*Family owned and operated
since 1955*



Toyota
Peerless
Bridgestone
Yokohama

Over 1,000 batteries in stock
Batteries for all applications
in stock

Name	WELDED CONSTRUCTION, BUSINESS	Invoice #	109277
Address	PO BOX470 26933 ECKEL RD	Date	08/21/2018 18:09:46
City, State, Zip	PERRYSBURG, OH 43651	Vehicle	2018 N/A TRAILER
Phone	4198743549	VIN/Plate	/
Company:	VALUED CUSTOMER		

Parts			
Quantity	Description	Unit Price	Ext. Price
1.00	205 75 15 KENDA LOADSTAR RADIAL NEW VALVE STEM TIRE DISPOSAL LIFETIME ROTATION COMPUTER BALANCE	\$ 74.95	\$ 74.95
1.00	PO# 86129	\$ 0.00	\$ 0.00

Paid in Full

Charge account: \$ 79.45

Signature: _____

By choosing Bleifus Tire for your new tire purchase, you saved \$ 14.99 off the retail price.

Parts Subtotal:	\$ 74.95
Labor Subtotal:	\$ 0.00
Sales Tax:	\$ 4.50
Total:	\$ 79.45

All lug nuts must be retorqued after 50 miles

Bleifus Tire IS NOT responsible for any belongings in your vehicle.

Return Policy - Any tire or battery purchased at Bleifus Tire can be returned within 48 hours for a 100% refund. We at Bleifus Tire guarantee 100% customer satisfaction on any and all service and merchandise.

Tire Warranty

- Passenger tires are covered with manufacturer defect and road hazard warranty. Tire replaced free through the first 50% of tread wear with a labor cost of \$20. Tire is prorated the second 50% of tread wear.
- SUV, van, performance and light truck tires are covered with manufacturer defect warranty only. Tire replaced free through the first 50% of tread wear with a labor cost of \$25. Tire is prorated the second 50% of tread wear.
- This warranty is subject to alignment, suspension and run flat condition of tire.
- Snow tires have manufacturer defect warranty only.
- Used tires have a 30-day replacement free guarantee warranty.
- All mileage warranties are contingent upon regular tire rotation and proper vehicle alignment.

Brake Warranty

- We use only premium lifetime Napa® pads and shoes with a free replacement warranty.
- Rotors and drums have a 1-year free replacement warranty. Customer is responsible for labor costs and additional part costs involved with free replacement.

Napa® Parts

- We use Napa® chassis lifetime warranty parts (ball joints, tie rods, idler arms, etc.) on all cars and trucks. If part fails, replacement part is free and labor is additional.
- Wheel bearings, shocks and struts have a 1-year limited warranty.

Alignment Warranty

- Hunter 4-wheel alignments has a 30-day warranty unless you upgrade to a 3-month, 6-month or lifetime warranty.

5-Year Battery

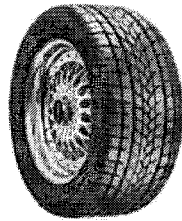
- If battery failure has been determined by our staff, we will replace it free the first year, and prorate \$2 per month starting from the original purchase date.

6-Year Battery

- If battery failure has been determined by our staff, we will replace it free the first two years, and prorate \$2 per month starting from the original purchase date.

Bleifus Tire, Alignment, Brake & Battery

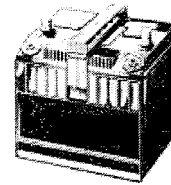
Goodyear
Firestone
General
Kumho



4274 National Road
Triadelphia, WV 26059-0081
Phone: (304) 547-5300 OR
(800) 254-5303

Fax: (304) 547-5323
bleifustire.com
Open Daily 8am-5:30pm,
Sat. till 2pm

Family owned and operated
since 1955



Toyota
Peerless
Bridgestone
Yokohama

Over 1,000 batteries in stock
Batteries for all applications
in stock

Over 10,000 tires in stock
New - Retread - Used
Passenger, Light Truck,
Farm & ATV

Name	WELDED CONSTRUCTION, BUSINESS	Invoice #	109301
Address	PO BOX470 26933 ECKEL RD	Date	08/22/2018 15:14:01
City, State, Zip	PERRYSBURG, OH 43551	Vehicle	2018 CHEVROLET 2500
Phone	4198743549	Mileage	5624
Company:	VALUED CUSTOMER	VIN/Plate	/ INA425505

Parts

Quantity	Description	Unit Price	Ext. Price
1.00	285 70 17 KENDA RT KR601 NEW VALVE STEM TIRE DISPOSAL LIFETIME ROTATION COMPUTER BALANCE	\$ 189.95	\$ 189.95
1.00	CREDIT	-\$ 50.00	-\$ 50.00
1.00	PO#86129	\$ 0.00	\$ 0.00

Paid in Full

Charge account: \$ 148.35

Signature: _____

By choosing Bleifus Tire for your new tire purchase, you saved \$ 37.99 off the retail price.

Parts Subtotal:	\$ 139.95
Labor Subtotal:	\$ 0.00
Sales Tax:	\$ 8.40
Total:	\$ 148.35

All lug nuts must be retorqued after 50 miles

Bleifus Tire IS NOT responsible for any belongings in your vehicle.

Return Policy - Any tire or battery purchased at Bleifus Tire can be returned within 48 hours for a 100% refund. We at Bleifus Tire guarantee 100% customer satisfaction on any and all service and merchandise.

Tire Warranty

- Passenger tires are covered with manufacturer defect and road hazard warranty. Tire replaced free through the first 50% of tread wear with a labor cost of \$20. Tire is prorated the second 50% of tread wear.
- SUV, van, performance and light truck tires are covered with manufacturer defect warranty only. Tire replaced free through the first 50% of tread wear with a labor cost of \$25. Tire is prorated the second 50% of tread wear.
- This warranty is subject to alignment, suspension and run flat condition of tire.
- Snow tires have manufacturer defect warranty only.
- Used tires have a 30-day replacement free guarantee warranty.
- All mileage warranties are contingent upon regular tire rotation and proper vehicle alignment.

Brake Warranty

- We use only premium lifetime Napa® pads and shoes with a free replacement warranty.
- Rotors and drums have a 1-year free replacement warranty. Customer is responsible for labor costs and additional part costs involved with free replacement.

Napa® Parts

- We use Napa® chassis lifetime warranty parts (ball joints, tie rods, idler arms, etc.) on all cars and trucks. If part fails, replacement part is free and labor is additional.
- Wheel bearings, shocks and struts have a 1-year limited warranty.

Alignment Warranty

- Hunter 4-wheel alignments has a 30-day warranty unless you upgrade to a 3-month, 6-month or lifetime warranty.

5-Year Battery

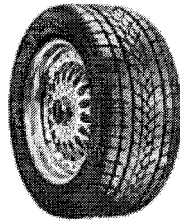
- If battery failure has been determined by our staff, we will replace it free the first year, and prorate \$2 per month starting from the original purchase date.

6-Year Battery

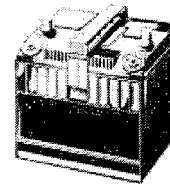
- If battery failure has been determined by our staff, we will replace it free the first two years, and prorate \$2 per month starting from the original purchase date.

Bleifus Tire, Alignment, Brake & Battery

Goodyear
Firestone
General
Kumho



4274 National Road
Triadelphia, WV 26059-0081
Phone: (304) 547-5300 OR
(800) 254-5303
Fax: (304) 547-5323
bleifustire.com
Open Daily 8am-5:30pm,
Sat. till 2pm
*Family owned and operated
since 1955*



Toyo
Peerless
Bridgestone
Yokohama

Over 10,000 tires in stock
New - Retread - Used
Passenger, Light Truck,
Farm & ATV

Over 1,000 batteries in stock
Batteries for all applications
in stock

Name	WELDED CONSTRUCTION, BUSINESS	Invoice #	110191
Address	PO BOX470 26933 ECKEL RD	Date	09/22/2018 09:17:35
City, State, Zip	PERRYSBURG, OH 43551	Vehicle	2018 N/A SAND BLASTER
Phone	4198743549	VIN/Plate	/
Company:	VALUED CUSTOMER		

Parts			
Quantity	Description	Unit Price	Ext. Price
2.00	205 75 15 KENDA LOADSTAR RADIAL NEW VALVE STEM TIRE DISPOSAL LIFETIME ROTATION COMPUTER BALANCE	\$ 85.00	\$ 170.00
Labor			
Quantity	Description	Unit Price	Ext. Price
1.00	PO#86129	\$ 0.00	\$ 0.00

Paid in Full

Charge account: \$ 180.20

Signature: _____

By choosing Bleifus Tire for your new tire purchase, you saved \$ 34.00 off the retail price.

Parts Subtotal:	\$ 170.00
Labor Subtotal:	\$ 0.00
Sales Tax:	\$ 10.20
Total:	\$ 180.20

All lug nuts must be retorqued after 50 miles

Bleifus Tire IS NOT responsible for any belongings in your vehicle.

Return Policy - Any tire or battery purchased at Bleifus Tire can be returned within 48 hours for a 100% refund. We at Bleifus Tire guarantee 100% customer satisfaction on any and all service and merchandise.

Tire Warranty

- Passenger tires are covered with manufacturer defect and road hazard warranty. Tire replaced free through the first 50% of tread wear with a labor cost of \$20. Tire is prorated the second 50% of tread wear.
- SUV, van, performance and light truck tires are covered with manufacturer defect warranty only. Tire replaced free through the first 50% of tread wear with a labor cost of \$25. Tire is prorated the second 50% of tread wear.
- This warranty is subject to alignment, suspension and run flat condition of tire.
- Snow tires have manufacturer defect warranty only.
- Used tires have a 30-day replacement free guarantee warranty.
- All mileage warranties are contingent upon regular tire rotation and proper vehicle alignment.

Brake Warranty

- We use only premium lifetime Napa® pads and shoes with a free replacement warranty.
- Rotors and drums have a 1-year free replacement warranty. Customer is responsible for labor costs and additional part costs involved with free replacement.

Napa® Parts

- We use Napa® chassis lifetime warranty parts (ball joints, tie rods, idler arms, etc.) on all cars and trucks. If part fails, replacement part is free and labor is additional.
- Wheel bearings, shocks and struts have a 1-year limited warranty.

Alignment Warranty

- Hunter 4-wheel alignments has a 30-day warranty unless you upgrade to a 3-month, 6-month or lifetime warranty.

5-Year Battery

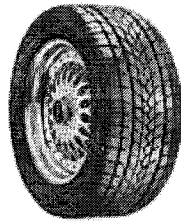
- If battery failure has been determined by our staff, we will replace it free the first year, and prorate \$2 per month starting from the original purchase date.

6-Year Battery

- If battery failure has been determined by our staff, we will replace it free the first two years, and prorate \$2 per month starting from the original purchase date.

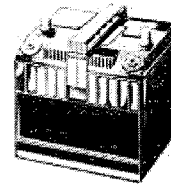
Bleifus Tire, Alignment, Brake & Battery

Goodyear
Firestone
General
Kumho



Over 10,000 tires in stock
New - Retread - Used
Passenger, Light Truck,
Farm & ATV

4274 National Road
Triadelphia, WV 26059-0081
Phone: (304) 547-5300 OR
(800) 254-5303
Fax: (304) 547-5323
bleifustire.com
Open Daily 8am-5:30pm,
Sat. till 2pm
*Family owned and operated
since 1955*



Over 1,000 batteries in stock
Batteries for all applications
in stock

Toyo
Peerless
Bridgestone
Yokohama

Name	WELDED CONSTRUCTION, BUSINESS	Invoice #	110218
Address	PO BOX470 26933 ECKEL RD	Date	09/24/2018 08:49:35
City, State, Zip	PERRYSBURG, OH 43551	Vehicle	2007 CHEVROLET 3500 DUMP TRUCK
Phone	4198743549	Mileage	63330
Company:	VALUED CUSTOMER	VIN/Plate	7E569684 / PKF6981

Parts			
Quantity	Description	Unit Price	Ext. Price
6.00	235 85 16 KENDA KLEVER M/T NEW VALVE STEM TIRE DISPOSAL. LIFETIME ROTATION COMPUTER BALANCE	\$ 144.95	\$ 869.70

Labor			
Quantity	Description	Unit Price	Ext. Price
1.00	PO#86129	\$ 0.00	\$ 0.00

Paid in Full

Charge account: \$ 921.88

Signature: _____

By choosing Bleifus Tire for your new tire purchase, you saved \$ 173.94 off the retail price.

Parts Subtotal:	\$ 869.70
Labor Subtotal:	\$ 0.00
Sales Tax:	\$ 52.18
Total:	\$ 921.88

All lug nuts must be retorqued after 50 miles

Bleifus Tire IS NOT responsible for any belongings in your vehicle.

Return Policy - Any tire or battery purchased at Bleifus Tire can be returned within 48 hours for a 100% refund. We at Bleifus Tire guarantee 100% customer satisfaction on any and all service and merchandise.

Tire Warranty

- Passenger tires are covered with manufacturer defect and road hazard warranty. Tire replaced free through the first 50% of tread wear with a labor cost of \$20. Tire is prorated the second 50% of tread wear.
- SUV, van, performance and light truck tires are covered with manufacturer defect warranty only. Tire replaced free through the first 50% of tread wear with a labor cost of \$25. Tire is prorated the second 50% of tread wear.
- This warranty is subject to alignment, suspension and run flat condition of tire.
- Snow tires have manufacturer defect warranty only.
- Used tires have a 30-day replacement free guarantee warranty.
- All mileage warranties are contingent upon regular tire rotation and proper vehicle alignment.

Brake Warranty

- We use only premium lifetime Napa® pads and shoes with a free replacement warranty.
- Rotors and drums have a 1-year free replacement warranty. Customer is responsible for labor costs and additional part costs involved with free replacement.

Napa® Parts

- We use Napa® chassis lifetime warranty parts (ball joints, tie rods, idler arms, etc.) on all cars and trucks. If part fails, replacement part is free and labor is additional.
- Wheel bearings, shocks and struts have a 1-year limited warranty.

Alignment Warranty

- Hunter 4-wheel alignments has a 30-day warranty unless you upgrade to a 3-month, 6-month or lifetime warranty.

5-Year Battery

- If battery failure has been determined by our staff, we will replace it free the first year, and prorate \$2 per month starting from the original purchase date.

6-Year Battery

- If battery failure has been determined by our staff, we will replace it free the first two years, and prorate \$2 per month starting from the original purchase date.