

1 SAMUEL R. MAIZEL (Bar No. 189301)  
samuel.maizel@dentons.com  
2 TANIA M. MOYRON (Bar No. 235736)  
tania.moyron@dentons.com  
3 DENTONS US LLP  
601 South Figueroa Street, Suite 2500  
4 Los Angeles, California 90017-5704  
Tel: (213) 623-9300 / Fax: (213) 623-9924  
5 Attorneys for the Chapter 11 Debtors and  
6 Debtors In Possession

7 **UNITED STATES BANKRUPTCY COURT**  
8 **CENTRAL DISTRICT OF CALIFORNIA - LOS ANGELES DIVISION**

9 In re  
10 VERITY HEALTH SYSTEM OF  
CALIFORNIA, INC., *et al.*,  
11 Debtors and Debtors In Possession.

Lead Case No. 2:18-bk-20151-ER

Jointly Administered With:  
Case No. 2:18-bk-20162-ER  
Case No. 2:18-bk-20163-ER  
Case No. 2:18-bk-20164-ER  
Case No. 2:18-bk-20165-ER  
Case No. 2:18-bk-20167-ER  
Case No. 2:18-bk-20168-ER  
Case No. 2:18-bk-20169-ER  
Case No. 2:18-bk-20171-ER  
Case No. 2:18-bk-20172-ER  
Case No. 2:18-bk-20173-ER  
Case No. 2:18-bk-20175-ER  
Case No. 2:18-bk-20176-ER  
Case No. 2:18-bk-20178-ER  
Case No. 2:18-bk-20179-ER  
Case No. 2:18-bk-20180-ER  
Case No. 2:18-bk-20181-ER

- 12  Affects All Debtors  
13  Affects Verity Health System of  
California, Inc.  
14  Affects O'Connor Hospital  
15  Affects Saint Louise Regional Hospital  
16  Affects St. Francis Medical Center  
17  Affects St. Vincent Medical Center  
18  Affects Seton Medical Center  
19  Affects O'Connor Hospital Foundation  
20  Affects Saint Louise Regional Hospital  
Foundation  
21  Affects St. Francis Medical Center of  
Lynwood Foundation  
22  Affects St. Vincent Foundation  
23  Affects St. Vincent Dialysis Center, Inc.  
24  Affects Seton Medical Center Foundation  
25  Affects Verity Business Services  
26  Affects Verity Medical Foundation  
27  Affects Verity Holdings, LLC  
28  Affects De Paul Ventures, LLC  
 Affects De Paul Ventures - San Jose  
Dialysis, LLC

Hon. Judge Ernest M. Robles

**NOTICE OF ERRATA RE NOVEMBER  
MONTHLY OPERATING REPORT**

**[RELATES TO DOCKET NO. 1172]**

Debtors and Debtors In Possession.

26 **PLEASE TAKE NOTICE** that Verity Health System of California, Inc. and the above-  
27 referenced affiliated debtors, the debtors and debtors in possession in the above-captioned chapter 11  
28



1 bankruptcy cases (collectively, the “Debtors”), hereby file this notice of errata and correction, as  
2 follows:

3 Certain pages in the Debtors’ November Monthly Operating Report (the “MOR”), at Docket  
4 No. 1172, appear in landscape instead of portrait. For ease of reference, the Debtors hereby file, as  
5 Exhibit “A,” another version of the MOR, wherein all pages appear in portrait. Other than the  
6 orientation of the pages in the MOR, no other changes were made to the MOR.

7  
8  
9  
10  
11  
12  
13  
14  
15  
16  
17  
18  
19  
20  
21  
22  
23  
24  
25  
26  
27  
28

Dated: December 31, 2018

DENTONS US LLP  
SAMUEL R. MAIZEL  
TANIA M. MOYRON

By /s/ Tania M. Moyron  
Tania M. Moyron

Attorneys for the Chapter 11 Debtors and  
Debtors In Possession

1  
2  
3  
4  
5  
6  
7  
8  
9  
10  
11  
12  
13  
14  
15  
16  
17  
18  
19  
20  
21  
22  
23  
24  
25  
26  
27  
28

**EXHIBIT "A"**

Attorney or Party Name, Address, Telephone and FAX	
Samuel R. Maizel, Esq. (Bar No. 189301) Tania M. Moyron, Esq. (Bar No. 235736) Dentons US LLP 601 South Figueroa Street, Suite 2500 Los Angeles, CA 90017-5704 T: (213) 623-9300 F: (213) 623-9924	
UNITED STATES DEPARTMENT OF JUSTICE OFFICE OF THE UNITED STATES TRUSTEE CENTRAL DISTRICT OF CALIFORNIA	ATTACH TO THE FRONT OF THE MONTHLY OPERATING REPORT AND SUBMIT TO UNITED STATES TRUSTEE
In re:	Case Number: 18-20151-ER (See Below)
VERITY HEALTH SYSTEM OF CALIFORNIA, INC, <i>et al.</i> ,  <div style="text-align: right;">Debtors.</div>	<b>MONTHLY OPERATING REPORT                  DISBURSEMENT SUMMARY</b>  <b>MOR NO. 3                  FOR MONTH                  ENDING: November 2018</b>

1. Total number of Debtor in Possession Bank Accounts for all Debtors.	65
2. TOTAL THIRD PARTY DISBURSEMENTS THIS PERIOD FROM ALL DEBTOR IN POSSESSION ACCOUNTS FOR ALL ENTITIES WITH BANK ACCOUNTS	<div style="border: 1px solid black; padding: 5px; display: inline-block;">\$114,585,036.98</div>

The Debtors in the these chapter 11 cases, along with their case numbers are, Verity Health System of California, Inc. 18-20151-ER, O'Connor Hospital 18-20168-ER, Saint Louise Regional Hospital 18-20162-ER, St. Francis Medical Center 18-20165-ER, St. Vincent Medical Center 18-20164-ER, Seton Medical Center 18-20167-ER, O'Connor Hospital Foundation 18-20179-ER, Saint Louise Regional Hospital Foundation 18-20172-ER, St. Francis Medical Center of Lynwood Foundation 18-20178-ER, St. Vincent Foundation 18-20180-ER, St. Vincent Dialysis Center, Inc. 18-20171-ER Seton Medical Center Foundation 18-20175-ER, Verity Business Services 18-20173-ER, Verity Medical Foundation 18-20169-ER, Verity Holdings, LLC 18-20163-ER, DePaul Ventures, LLC 18-20176-ER, and DePaul Ventures - San Jose Dialysis, LLC 18-20181-ER.

Effective September 1, 2011

USTLA 16

**Verity Bank Account Summary**

For month ending 11/30/2018

\$ in 000's

Debtor Name <sup>1</sup>	Debtor Case #	Beg Balance	Total		Operating		Sweep Inflows	Sweep Outflows	DIP Inflows <sup>2</sup>	DIP Outflows <sup>2</sup>	I/C Inflows	I/C Outflows	Ending Bank Balance	Total Transaction Count
			Receipts	Disbursements	Disbursements	Disbursements								
Verity Health System of California, Inc.	18-20151	\$ 12,804	\$ 245	\$ (27,742)	\$ -	\$ -	\$ -	\$ (0)	\$ 123,227	\$ (85,755)	\$ 22,779			540
O'Connor Hospital	18-20168	11,917	18,872	(15,788)	37,874	(37,874)	-	-	17,247	(27,121)	5,126			1,726
St. Louise Regional Hospital	18-20162	4,439	6,177	(4,960)	12,565	(12,565)	-	-	5,510	(9,072)	2,095			1,075
St. Francis Medical Center	18-20165	25,700	33,861	(23,348)	67,792	(67,792)	-	-	26,594	(49,053)	13,753			2,061
St. Vincent Medical Center	18-20164	10,208	14,283	(15,194)	29,230	(29,230)	-	-	17,842	(20,594)	6,546			1,331
Seton Medical Center	18-20167	11,650	20,205	(12,967)	40,902	(40,902)	-	-	20,157	(28,321)	10,723			1,631
O'Connor Hospital Foundation	18-20179	1,722	3	-	-	-	-	-	-	(6)	1,719			9
St. Louise Regional Hospital Foundation	18-20172	727	3	(0)	-	-	-	-	-	(74)	656			7
St. Francis Medical Center of Lynwood Foundation	18-20178	1,262	206	(0)	-	-	-	-	-	(521)	946			6
St. Vincent Medical Center Foundation	18-20180	1,734	27	-	-	-	-	-	-	(24)	1,737			4
St. Vincent Dialysis Center, Inc.	18-20171	1,178	381	-	-	-	-	-	-	(374)	1,185			24
Seton Medical Center Foundation	18-20175	6,213	11	(1)	-	-	-	-	-	(239)	5,984			25
Verity Business Services	18-20173	1,385	-	(2,629)	-	-	-	-	5,317	(1,617)	2,456			83
Verity Medical Foundation	18-20169	7,480	5,948	(11,274)	-	-	-	-	13,000	(5,633)	9,521			2,840
Verity Holdings, LLC	18-20163	7,608	452	(682)	-	-	-	-	5,713	(6,201)	6,891			83
<b>Subtotal</b>		<b>\$ 106,027</b>	<b>\$ 100,676</b>	<b>\$ (114,585)</b>	<b>\$ 188,363</b>	<b>\$ (188,363)</b>	<b>\$ -</b>	<b>\$ (0)</b>	<b>\$ 234,607</b>	<b>\$ (234,607)</b>	<b>\$ 92,118</b>			<b>11,445</b>

**Notes**

- 1) In our monthly submissions, De Paul Ventures, LLC and De Paul Ventures - San Jose Dialysis, LLC are not included above because they do not have bank accounts.
- 2) Pursuant to the terms of the DIP loan agreement, Verity submits its cash inflows to the Debtors' DIP Lender Ally Bank on a daily basis even when there is no DIP balance outstanding. When this occurs, Ally Bank returns the funds to Verity. Commencing in November 2018, when there was no DIP balance outstanding, funds flowed to Ally Bank from the VHS – DIP Concentration Account and were returned by Ally to the new VHS – DIP Loan Proceeds account. Prior to the implementation of this cash management process, funds flowed to/ from Ally Bank through the VHS – AP account and such activity netted to zero to the extent funds were sent to and received from Ally Bank in the same month. The aggregate of the DIP Inflows and DIP Outflows columns above represent cumulative DIP borrowings and DIP repayments, respectively, for the period presented.

**Verity Bank Account Summary**  
For month ending 11/30/2018  
\$ in 000's

Bank Account Name	Bank Account Number	Beg Balance	Total Receipts	Operating Disbursements	Sweep Inflows	Sweep Outflows	DIP Inflows <sup>2</sup>	DIP Outflows <sup>2</sup>	I/C Inflows	I/C Outflows	Ending Bank Balance	Total Transaction Count
VHS - AP	XXXXXX6440	\$ 11,953	\$ 76	\$ (23,873)	\$ -	\$ -	\$ -	\$ (5,464)	\$ 23,600	\$ (3,220)	\$ 3,072	269
VHS - Self Insurance	XXXXXX9250	43	35	-	-	-	-	-	-	(35)	43	2
VHS - Payroll	XXXXXX1785	808	-	(3,761)	-	-	-	-	3,220	-	267	24
VHS - DIP Concentration Account	XXXXXX2889	-	134	-	-	-	-	(96,407)	96,407	-	134	191
VHS - DIP Loan Proceeds	XXXXXX4358	-	-	(107)	-	-	-	101,871	-	(82,500)	19,264	54
OCH - Lockbox	XXXXXX2945	76	18,871	-	-	(18,499)	-	-	-	-	449	810
OCH - Gross Revenue	XXXXXX3900	1,441	-	-	18,499	(19,375)	-	-	-	-	564	40
OCH - AP	XXXXXX6389	9,822	-	(6,659)	19,375	-	-	-	8,231	(26,996)	3,773	637
OCH - Payroll	XXXXXX3007	453	-	(9,129)	-	-	-	-	9,016	-	339	236
OCH - FSA	XXXXXX2284	125	-	-	-	-	-	-	-	(125)	-	2
OCH - Patient Trust	XXXXXX2662	0	1	-	-	-	-	-	-	-	1	1
SLRH - Lockbox	XXXXXX2926	66	6,177	-	-	(6,123)	-	-	-	-	120	614
SLRH - Gross Revenue	XXXXXX3905	422	-	-	6,123	(6,442)	-	-	-	-	102	40
SLRH - AP	XXXXXX6421	3,712	-	(1,924)	6,442	-	-	-	2,507	(9,040)	1,698	331
SLRH - Payroll	XXXXXX7575	207	-	(3,036)	-	-	-	-	3,004	-	175	89
SLRH - FSA	XXXXXX2307	33	-	-	-	-	-	-	-	(33)	-	1
SFMC - Lockbox	XXXXXX2940	486	33,828	-	-	(33,748)	-	-	-	-	566	403
SFMC - Gross Revenue	XXXXXX3924	1,455	-	-	33,748	(34,044)	-	-	-	-	1,159	40
SFMC - AP	XXXXXX6407	22,094	-	(8,321)	34,044	-	-	-	10,810	(48,438)	10,188	637
SFMC - Payroll	XXXXXX3012	587	-	(12,650)	-	-	-	-	12,620	-	557	345
SFMC - FSA	XXXXXX2487	198	-	-	-	-	-	-	-	(198)	-	1
SFMC - Cafeteria Deposits	XXXXXX1057	385	32	(0)	-	-	-	-	-	(417)	0	51
SFMC - Capitation (AppleCare)	XXXXXX1371	79	-	(1,801)	-	-	-	-	2,469	-	747	281
SFMC - Capitation (Conifer)	XXXXXX1357	300	-	(356)	-	-	-	-	436	-	379	223
SFMC - Capitation AC	XXXXXX1845	8	-	(11)	-	-	-	-	11	-	8	18
SFMC - Capitation HCLA	XXXXXX1840	69	-	(209)	-	-	-	-	249	-	109	52
SFMC - Career College	XXXXXX2162	39	1	(0)	-	-	-	-	-	-	40	10
SVMC - Lockbox	XXXXXX2964	215	14,282	-	-	(14,330)	-	-	-	-	167	542
SVMC - Gross Revenue	XXXXXX3929	1,158	-	-	14,330	(14,900)	-	-	-	-	589	40
SVMC - AP	XXXXXX6426	6,602	-	(8,427)	14,900	-	-	-	11,076	(20,542)	3,609	482
SVMC - Payroll	XXXXXX3017	221	-	(6,573)	-	-	-	-	6,500	-	148	211
SVMC - FSA	XXXXXX2062	52	-	-	-	-	-	-	-	(52)	-	1
SVMC - Capitation (CHP)	XXXXXX0553	332	-	-	-	-	-	-	-	-	332	-
SVMC - Capitation (Conifer)	XXXXXX3695	396	-	(194)	-	-	-	-	266	-	467	54
SVMC - Restricted Cash <sup>3</sup>	XXXXXX0989	1,232	1	-	-	-	-	-	-	-	1,233	1
SMC - Lockbox	XXXXXX2902	279	19,925	-	-	(20,090)	-	-	-	-	113	673
SMC - Gross Revenue	XXXXXX3887	1,148	-	-	20,090	(20,299)	-	-	-	-	940	40
SMC - AP	XXXXXX6365	7,410	-	(4,072)	20,299	-	-	-	11,356	(27,936)	7,057	491
SMC - Payroll	XXXXXX3001	1,238	-	(8,816)	-	-	-	-	8,781	-	1,203	194
SMC - FSA	XXXXXX2289	117	-	-	-	-	-	-	-	(117)	-	1
SMCC - Lockbox	XXXXX02907	2	281	-	-	(264)	-	-	-	-	18	91
SMCC - Gross Revenue	XXXXXX3882	40	-	-	264	(249)	-	-	-	-	56	40
SMCC - AP	XXXXXX6384	1,374	-	(79)	249	-	-	-	19	(248)	1,315	100
SMCC - FSA	XXXXXX2302	19	-	-	-	-	-	-	-	(19)	-	1
SMCC - Patient Trust	XXXXX12907	22	-	-	-	-	-	-	-	-	22	-

**Verity Bank Account Summary**  
For month ending 11/30/2018  
\$ in 000's

Bank Account Name	Bank Account Number	Beg Balance	Total Receipts	Operating Disbursements	Sweep Inflows	Sweep Outflows	DIP Inflows <sup>2</sup>	DIP Outflows <sup>2</sup>	I/C Inflows	I/C Outflows	Ending Bank Balance	Total Transaction Count
OCH Foundation <sup>3</sup>	XXXXXX3433	1,480	3	-	-	-	-	-	-	(6)	1,476	5
OCH Foundation - Investment <sup>3</sup>	XXXXX2-037	242	0	-	-	-	-	-	-	-	242	4
SLRH Foundation <sup>3</sup>	XXXXXX2521	727	3	(0)	-	-	-	-	-	(74)	656	7
SFMC of Lynwood Foundation <sup>3</sup>	XXXXXX2809	1,262	206	(0)	-	-	-	-	-	(521)	946	6
SVMC Foundation <sup>3</sup>	XXXXXX3025	964	26	-	-	-	-	-	-	(24)	966	3
SVMC Foundation - EWB <sup>3</sup>	XXXXXX1162	770	0	-	-	-	-	-	-	-	771	1
St. Vincent Dialysis Center	XXXXXX8921	1,178	381	-	-	-	-	-	-	(374)	1,185	24
SMC Foundation <sup>3</sup>	XXXXXX2260	5,793	6	(0)	-	-	-	-	-	(239)	5,560	4
SMC Foundation - SVCS <sup>3</sup>	XXXXXX0089	420	4	(1)	-	-	-	-	-	-	424	21
VBS - AP	XXXXXX6402	1,344	-	(1,031)	-	-	-	-	3,726	(1,591)	2,448	59
VBS - Payroll	XXXXXX2982	16	-	(1,598)	-	-	-	-	1,591	-	8	23
VBS - FSA	XXXXXX3192	26	-	-	-	-	-	-	-	(26)	-	1
VMF - Checking	XXXXXX9996	7,480	5,941	(11,267)	-	-	-	-	13,000	(5,633)	9,521	2,838
VMF - Payroll ZBA	XXXXXX0010	-	7	(7)	-	-	-	-	-	-	-	2
VH - AP	XXXXXX1597	989	-	(273)	-	-	-	-	5,713	-	6,430	43
VH - MOB	XXXXXX1248	496	452	-	-	-	-	-	-	(488)	461	32
VH - Operating	XXXXXX1970	6,123	-	(409)	-	-	-	-	-	(5,713)	-	5
VH - Savings	XXXXXX1975	(0)	-	(0)	-	-	-	-	0	-	-	3
SMCC - Patient Trust - TCB	XXXXXX3611	-	-	-	-	-	-	-	-	-	-	-
SMC Foundation - TCB <sup>3</sup>	XXXXXX8521	-	-	-	-	-	-	-	-	-	-	-
<b>Subtotal</b>		<b>\$ 106,027</b>	<b>\$ 100,676</b>	<b>\$ (114,585)</b>	<b>\$ 188,363</b>	<b>\$ (188,363)</b>	<b>\$ -</b>	<b>\$ -</b>	<b>\$ 234,607</b>	<b>\$ (234,607)</b>	<b>\$ 92,118</b>	<b>11,445</b>

**Notes**

- 1) Sweep inflows and outflows reflect sweeps between lockbox, gross revenue and AP accounts of the same debtor.
- 2) Pursuant to the terms of the DIP loan agreement, Verity submits its cash inflows to the Debtors' DIP Lender Ally Bank on a daily basis even when there is no DIP balance outstanding. When this occurs, Ally Bank returns the funds to Verity. Commencing in November 2018, when there was no DIP balance outstanding, funds flowed to Ally Bank from the VHS – DIP Concentration Account and were returned by Ally to the new VHS – DIP Loan Proceeds account. Prior to the implementation of this cash management process, funds flowed to/ from Ally Bank through the VHS – AP account and such activity netted to zero to the extent funds were sent to and received from Ally Bank in the same month. The aggregate of the DIP Inflows and DIP Outflows columns above represent cumulative DIP borrowings and DIP repayments, respectively, for the period presented.
- 3) This bank account contains certain funds that are donor restricted, and therefore, are not available for the debtor's general operating activities. Please refer to the attached restricted funds schedule for additional restricted funds recorded by the debtors that are not included in the Verity bank account summary as they are not part of the cash management program.

**Verity Bank Account Cumulative Summary**

For the three months ending 11/30/2018 (including 8/31/2018 activity)

\$ in 000's

Debtor Name <sup>1</sup>	Debtor Case #	Beg Balance	Total		Operating		Sweep Inflows	Sweep Outflows	DIP Inflows <sup>2</sup>	DIP Outflows <sup>2</sup>	I/C Inflows	I/C Outflows	Ending Bank Balance	Total Transaction Count
			Receipts	Disbursements	Disbursements	Disbursements								
Verity Health System of California, Inc.	18-20151	\$ 7,529	\$ 630	\$ (86,351)	\$ -	\$ -	\$ 40,000	\$ (40,000)	\$ 201,490	\$ (100,519)	\$ 22,779			1,103
O'Connor Hospital	18-20168	8,981	62,700	(45,601)	126,273	(126,273)	-	-	39,261	(60,215)	5,126			4,745
St. Louise Regional Hospital	18-20162	3,978	19,672	(14,737)	39,793	(39,793)	-	-	12,923	(19,740)	2,095			3,112
St. Francis Medical Center	18-20165	10,077	135,926	(63,137)	270,950	(270,950)	-	-	53,787	(122,900)	13,753			5,249
St. Vincent Medical Center	18-20164	9,936	47,112	(42,723)	93,983	(93,983)	-	-	33,996	(41,775)	6,546			3,757
Seton Medical Center	18-20167	5,884	56,246	(38,335)	111,678	(111,678)	-	-	40,176	(53,247)	10,723			4,817
O'Connor Hospital Foundation	18-20179	1,714	10	-	-	-	-	-	-	(6)	1,719			22
St. Louise Regional Hospital Foundation	18-20172	720	10	(1)	-	-	-	-	-	(74)	656			19
St. Francis Medical Center of Lynwood Foundation	18-20178	780	688	(0)	-	-	-	-	-	(521)	946			19
St. Vincent Medical Center Foundation	18-20180	1,613	147	-	-	-	-	-	-	(24)	1,737			18
St. Vincent Dialysis Center, Inc.	18-20171	332	1,234	(7)	-	-	-	-	-	(374)	1,185			59
Seton Medical Center Foundation	18-20175	6,229	30	(36)	-	-	-	-	117	(357)	5,984			118
Verity Business Services	18-20173	1,003	-	(7,347)	-	-	-	-	13,692	(4,892)	2,456			233
Verity Medical Foundation	18-20169	4,493	20,717	(30,641)	-	-	-	-	20,586	(5,633)	9,521			8,121
Verity Holdings, LLC	18-20163	12,778	1,544	(1,681)	-	-	-	-	9,659	(15,408)	6,891			212
<b>Subtotal</b>		<b>\$ 76,048</b>	<b>\$ 346,667</b>	<b>\$ (330,597)</b>	<b>\$ 642,678</b>	<b>\$ (642,678)</b>	<b>\$ 40,000</b>	<b>\$ (40,000)</b>	<b>\$ 425,685</b>	<b>\$ (425,685)</b>	<b>\$ 92,118</b>			<b>31,604</b>

**Notes**

- 1) In our monthly submissions, De Paul Ventures, LLC and De Paul Ventures - San Jose Dialysis, LLC are not included above because they do not have bank accounts.
- 2) Pursuant to the terms of the DIP loan agreement, Verity submits its cash inflows to the Debtors' DIP Lender Ally Bank on a daily basis even when there is no DIP balance outstanding. When this occurs, Ally Bank returns the funds to Verity. Commencing in November 2018, when there was no DIP balance outstanding, funds flowed to Ally Bank from the VHS – DIP Concentration Account and were returned by Ally to the new VHS – DIP Loan Proceeds account. Prior to the implementation of this cash management process, funds flowed to/ from Ally Bank through the VHS – AP account and such activity netted to zero to the extent funds were sent to and received from Ally Bank in the same month. The aggregate of the DIP Inflows and DIP Outflows columns above represent cumulative DIP borrowings and DIP repayments, respectively, for the period presented.



## Verity Bank Account Cumulative Summary

For the three months ending 11/30/2018 (including 8/31/2018 activity)

\$ in 000's

Bank Account Name	Bank Account Number	Beg Balance	Total Receipts	Operating Disbursements	Sweep Inflows	Sweep Outflows	DIP Inflows <sup>2</sup>	DIP Outflows <sup>2</sup>	I/C Inflows	I/C Outflows	Ending Bank Balance	Total Transaction Count
VHS - AP	XXXXXX6440	\$ 7,083	\$ 417	\$ (74,982)	\$ -	\$ -	\$ 40,000	\$ (45,464)	\$ 93,800	\$ (17,783)	\$ 3,072	789
VHS - Self Insurance	XXXXXX9250	200	79	-	-	-	-	-	-	(236)	43	5
VHS - Payroll	XXXXXX1785	246	-	(11,262)	-	-	-	11,283	-	-	267	64
VHS - DIP Concentration Account	XXXXXX2889	-	134	-	-	-	-	(96,407)	96,407	-	134	191
VHS - DIP Loan Proceeds	XXXXXX4358	-	-	(107)	-	-	-	101,871	-	(82,500)	19,264	54
OCH - Lockbox	XXXXXX2945	188	62,697	-	-	(62,436)	-	-	-	-	449	2,436
OCH - Gross Revenue	XXXXXX3900	1,962	-	-	62,436	(63,837)	-	-	2	-	564	121
OCH - AP	XXXXXX6389	6,499	-	(14,706)	63,837	-	-	-	8,231	(60,088)	3,773	1,527
OCH - Payroll	XXXXXX3007	207	-	(30,894)	-	-	-	-	31,027	-	339	655
OCH - FSA	XXXXXX2284	125	-	-	-	-	-	-	-	(125)	-	2
OCH - Patient Trust	XXXXXX2662	-	4	-	-	-	-	-	-	(2)	1	4
SLRH - Lockbox	XXXXXX2926	24	19,671	-	-	(19,575)	-	-	-	-	120	1,914
SLRH - Gross Revenue	XXXXXX3905	746	0	-	19,575	(20,219)	-	-	-	-	102	121
SLRH - AP	XXXXXX6421	3,047	1	(4,368)	20,219	-	-	-	2,507	(19,708)	1,698	784
SLRH - Payroll	XXXXXX7575	128	-	(10,369)	-	-	-	-	10,416	-	175	292
SLRH - FSA	XXXXXX2307	33	-	-	-	-	-	-	-	(33)	-	1
SFMC - Lockbox	XXXXXX2940	357	135,812	-	-	(135,603)	-	-	-	-	566	1,237
SFMC - Gross Revenue	XXXXXX3924	903	-	-	135,603	(135,347)	-	-	-	-	1,159	120
SFMC - AP	XXXXXX6407	7,314	4	(21,001)	135,347	-	-	-	10,810	(122,285)	10,188	1,601
SFMC - Payroll	XXXXXX3012	589	-	(38,232)	-	-	-	-	38,200	-	557	1,086
SFMC - FSA	XXXXXX2487	198	-	-	-	-	-	-	-	(198)	-	1
SFMC - Cafeteria Deposits	XXXXXX1057	312	105	(0)	-	-	-	-	-	(417)	0	133
SFMC - Capitation (AppleCare)	XXXXXX1371	128	-	(3,083)	-	-	-	-	3,702	-	747	495
SFMC - Capitation (Conifer)	XXXXXX1357	156	-	(574)	-	-	-	-	798	-	379	427
SFMC - Capitation AC	XXXXXX1845	10	-	(13)	-	-	-	-	11	-	8	30
SFMC - Capitation HCLA	XXXXXX1840	75	0	(233)	-	-	-	-	266	-	109	86
SFMC - Career College	XXXXXX2162	37	4	(1)	-	-	-	-	-	-	40	33
SVMC - Lockbox	XXXXXX2964	13	47,104	-	-	(46,950)	-	-	-	-	167	1,696
SVMC - Gross Revenue	XXXXXX3929	672	2	-	46,950	(47,034)	-	-	-	-	589	122
SVMC - AP	XXXXXX6426	6,943	-	(19,721)	47,034	-	-	-	11,076	(41,723)	3,609	1,204
SVMC - Payroll	XXXXXX3017	116	0	(22,487)	-	-	-	-	22,520	-	148	600
SVMC - FSA	XXXXXX2062	52	-	-	-	-	-	-	-	(52)	-	1
SVMC - Capitation (CHP)	XXXXXX0553	493	-	(161)	-	-	-	-	-	-	332	20
SVMC - Capitation (Conifer)	XXXXXX3695	417	4	(353)	-	-	-	-	400	-	467	110
SVMC - Restricted Cash <sup>3</sup>	XXXXXX0989	1,230	3	-	-	-	-	-	-	-	1,233	4
SMC - Lockbox	XXXXXX2902	14	55,484	-	-	(55,385)	-	-	-	-	113	2,034
SMC - Gross Revenue	XXXXXX3887	370	-	-	55,385	(54,816)	-	-	-	-	940	120
SMC - AP	XXXXXX6365	2,911	-	(11,188)	54,816	-	-	-	13,356	(52,838)	7,057	1,356
SMC - Payroll	XXXXXX3001	1,212	-	(26,785)	-	-	-	-	26,776	-	1,203	645
SMC - FSA	XXXXXX2289	117	1	-	-	-	-	-	-	(117)	-	2
SMCC - Lockbox	XXXXX02907	2	756	-	-	(740)	-	-	-	-	18	269
SMCC - Gross Revenue	XXXXXX3882	54	-	-	740	(738)	-	-	-	-	56	120
SMCC - AP	XXXXXX6384	1,160	-	(354)	738	-	-	-	19	(248)	1,315	254
SMCC - FSA	XXXXXX2302	19	-	-	-	-	-	-	-	(19)	-	1
SMCC - Patient Trust	XXXXXX12907	-	5	(7)	-	-	-	-	24	-	22	14

**Verity Bank Account Cumulative Summary**

For the three months ending 11/30/2018 (including 8/31/2018 activity)

\$ in 000's

Bank Account Name	Bank Account Number	Beg Balance	Total Receipts	Operating Disbursements	Sweep Inflows	Sweep Outflows	DIP Inflows <sup>2</sup>	DIP Outflows <sup>2</sup>	I/C Inflows	I/C Outflows	Ending Bank Balance	Total Transaction Count
OCH Foundation <sup>3</sup>	XXXXXX3433	1,473	10	-	-	-	-	-	-	(6)	1,476	14
OCH Foundation - Investment <sup>3</sup>	XXXXX2-037	242	0	-	-	-	-	-	-	-	242	8
SLRH Foundation <sup>3</sup>	XXXXXX2521	720	10	(1)	-	-	-	-	-	(74)	656	19
SFMC of Lynwood Foundation <sup>3</sup>	XXXXXX2809	780	688	(0)	-	-	-	-	-	(521)	946	19
SVMC Foundation <sup>3</sup>	XXXXXX3025	844	146	-	-	-	-	-	-	(24)	966	14
SVMC Foundation - EWB <sup>3</sup>	XXXXXX1162	769	1	-	-	-	-	-	-	-	771	4
St. Vincent Dialysis Center	XXXXXX8921	332	1,234	(7)	-	-	-	-	-	(374)	1,185	59
SMC Foundation <sup>3</sup>	XXXXXX2260	5,660	24	(2)	-	-	-	-	117	(239)	5,560	17
SMC Foundation - SVCS <sup>3</sup>	XXXXXX0089	451	6	(34)	-	-	-	-	-	-	424	98
VBS - AP	XXXXXX6402	962	-	(2,475)	-	-	-	-	8,826	(4,866)	2,448	158
VBS - Payroll	XXXXXX2982	15	-	(4,873)	-	-	-	-	4,866	-	8	74
VBS - FSA	XXXXXX3192	26	-	-	-	-	-	-	-	(26)	-	1
VMF - Checking	XXXXXX9996	4,493	20,696	(30,620)	-	-	-	-	20,586	(5,633)	9,521	8,115
VMF - Payroll ZBA	XXXXXX0010	-	21	(21)	-	-	-	-	-	-	-	6
VH - AP	XXXXXX1597	1,106	-	(690)	-	-	-	-	6,013	-	6,430	116
VH - MOB	XXXXXX1248	1,108	1,542	-	-	-	-	-	-	(2,189)	461	72
VH - Operating	XXXXXX1970	8,321	-	(991)	-	-	-	-	3,645	(10,975)	-	14
VH - Savings	XXXXXX1975	2,243	1	(0)	-	-	-	-	0	(2,244)	-	10
SMCC - Patient Trust - TCB	XXXXXX3611	24	0	-	-	-	-	-	-	(24)	-	2
SMC Foundation - TCB <sup>3</sup>	XXXXXX8521	117	0	-	-	-	-	-	-	(117)	-	3
<b>Subtotal</b>		<b>\$ 76,048</b>	<b>\$ 346,667</b>	<b>\$ (330,597)</b>	<b>\$ 642,678</b>	<b>\$ (642,678)</b>	<b>\$ 40,000</b>	<b>\$ (40,000)</b>	<b>\$ 425,685</b>	<b>\$ (425,685)</b>	<b>\$ 92,118</b>	<b>31,604</b>

**Notes**

- 1) Sweep inflows and outflows reflect sweeps between lockbox, gross revenue and AP accounts of the same debtor.
- 2) Pursuant to the terms of the DIP loan agreement, Verity submits its cash inflows to the Debtors' DIP Lender Ally Bank on a daily basis even when there is no DIP balance outstanding. When this occurs, Ally Bank returns the funds to Verity. Commencing in November 2018, when there was no DIP balance outstanding, funds flowed to Ally Bank from the VHS – DIP Concentration Account and were returned by Ally to the new VHS – DIP Loan Proceeds account. Prior to the implementation of this cash management process, funds flowed to/ from Ally Bank through the VHS – AP account and such activity netted to zero to the extent funds were sent to and received from Ally Bank in the same month. The aggregate of the DIP Inflows and DIP Outflows columns above represent cumulative DIP borrowings and DIP repayments, respectively, for the period presented.
- 3) This bank account contains certain funds that are donor restricted, and therefore, are not available for the debtor's general operating activities. Please refer to the attached restricted funds schedule for additional restricted funds recorded by the debtors that are not included in the Verity bank account summary as they are not part of the cash management program.

Verity Health System of California, Inc.  
Bank Reconciliation Summary  
November 30, 2018  
\$ in 000's

Bank Account No. (last 4 digits)	VHS - AP / Self Insurance	VHS - Payroll	VHS - DIP Concentration Account	VHS - DIP Loan Proceeds	Debtor Total
	6440 / 9250	1785	2889	4358	
<b>Balance Per Bank</b>	\$ 3,115	\$ 267	\$ 134	\$ 19,264	\$ 22,779
<b>Additive Items:</b>					-
Deposits in Transit					-
Other Additive Items					-
<b>Subtractive Items:</b>					-
Outstanding Checks	(2,463)	(18)			(2,482)
Other Subtractive Items		(11)			(11)
<b>Reclassifications</b>					-
Negative book balance reclassified to AP					-
<b>Petty Cash</b>					-
<b>Adjusted Bank Balance</b>	<b>652</b>	<b>237</b>	<b>134</b>	<b>19,264</b>	<b>20,287</b>
GL Balance	\$ 652	\$ 237	\$ 134	\$ 19,264	\$ 20,287
<b>Number of Outstanding Checks</b>	<b>147</b>	<b>4</b>			<b>151</b>

O'Connor Hospital  
Bank Reconciliation Summary  
November 30, 2018  
\$ in 000's

Bank Account No. (last 4 digits)							Debtor
	OCH - AP	OCH - Payroll	OCH -Lockbox/GR	OCH - Patient Trust	OCH - FSA	Petty Cash Total	Total
	6389	3007	2945 / 3900	2662	2284	N/A	
<b>Balance Per Bank</b>	\$ 3,773	\$ 339	\$ 1,013	\$ 1	\$ -		\$ 5,126
<b>Additive Items:</b>							-
Deposits in Transit							-
Other Additive Items			99				99
<b>Subtractive Items:</b>							-
Outstanding Checks	(2,041)	(166)					(2,207)
Other Subtractive Items			(229)				(229)
<b>Reclassifications</b>							-
Reconciling item							-
<b>Petty Cash</b>						5	5
<b>Adjusted Bank Balance</b>	<b>1,732</b>	<b>173</b>	<b>883</b>	<b>1</b>	<b>-</b>	<b>5</b>	<b>2,794</b>
GL Balance	\$ 1,732	\$ 173	\$ 883	\$ 1	\$ -	\$ 5	\$ 2,794
<b>Number of Outstanding Checks</b>	<b>250</b>	<b>119</b>					<b>369</b>

Saint Louise Regional Hospital  
Bank Reconciliation Summary  
November 30, 2018  
\$ in 000's

Bank Account No. (last 4 digits)						Debtor
	SLRH - AP	SLRH - Payroll	SLRH - Lockbox/GR	SLRH - FSA	Petty Cash Total	Total
	6421	7575	2926 / 3905	2307	N/A	
<b>Balance Per Bank</b>	\$ 1,698	\$ 175	\$ 222	-		\$ 2,095
<b>Additive Items:</b>						-
Deposits in Transit						-
Other Additive Items	6		80			86
<b>Subtractive Items:</b>						-
Outstanding Checks	(680)					(732)
Other Subtractive Items		(52)				-
<b>Reclassifications</b>						-
Negative book balance reclassified to AP						-
<b>Petty Cash</b>					3	3
<b>Adjusted Bank Balance</b>	<b>1,024</b>	<b>124</b>	<b>302</b>	<b>-</b>	<b>3</b>	<b>1,452</b>
GL Balance	\$ 1,024	\$ 124	\$ 302	\$ -	\$ 3	\$ 1,452
<b>Number of Outstanding Checks</b>	<b>189</b>	<b>36</b>				<b>225</b>

St. Francis Medical Center  
Bank Reconciliation Summary  
November 30, 2018  
\$ in 000's

Bank Account No. (last 4 digits)	SFMC - AP	SFMC - Payroll	SFMC - Lockbox/GR	SFMC - FSA	SFMC - Capitation (Conifer)	SFMC - Capitation (AppleCare)	SFMC - Capitation HCLA / AC	SFMC - Career College	Petty Cash Total	Debtor Total
	6407	3012	2940 / 3924 / 1057	2487	1357	1371	1840 / 1845	2162	N/A	
<b>Balance Per Bank</b>	\$ 10,188	\$ 557	\$ 1,725	\$ -	\$ 379	\$ 747	\$ 117	\$ 40		\$ 13,753
<b>Additive Items:</b>										
Deposits in Transit						138	43			180
Other Additive Items		197					479	2		678
<b>Subtractive Items:</b>										
Outstanding Checks	(2,670)	(361)			(1,710)	(2,683)	(139)			(7,563)
Other Subtractive Items			(266)		(276)					(542)
<b>Reclassifications</b>										
Negative book balance reclassified to AP					1,607	1,798				3,405
<b>Petty Cash</b>									3	3
<b>Adjusted Bank Balance</b>	<b>7,519</b>	<b>392</b>	<b>1,459</b>	<b>-</b>	<b>0</b>	<b>(0)</b>	<b>499</b>	<b>42</b>	<b>3</b>	<b>9,915</b>
GL Balance	\$ 7,519	\$ 392	\$ 1,459	\$ -	\$ -	\$ -	\$ 500	\$ 42	\$ 3	\$ 9,915
<b>Number of Outstanding Checks</b>	<b>297</b>	<b>426</b>			<b>825</b>	<b>224</b>	<b>46</b>			<b>1,818</b>

St Vincent Medical Center  
Bank Reconciliation Summary  
November 30, 2018  
\$ in 000's

Bank Account No. (last 4 digits)	SVMC - AP	SVMC - Payroll	SVMC - Lockbox/GR	SVMC - Capitation (Conifer)	SVMC - Capitation (CHP)	SVMC - FSA	SVMC - Restricted Cash	Petty Cash Total	Debtor Total
	6426	3017	2964 / 3929	3695	0553	2062	0989	N/A	
<b>Balance Per Bank</b>	\$ 3,609	\$ 148	\$ 756	\$ 467	\$ 332	\$ -	\$ 1,233		\$ 6,546
<b>Additive Items:</b>									
Deposits in Transit									-
Other Additive Items			48						48
<b>Subtractive Items:</b>									
Outstanding Checks	(2,180)	(100)		(183)	(186)				(2,649)
Other Subtractive Items									-
<b>Reclassifications</b>									
Negative book balance reclassified to AP									-
<b>Petty Cash</b>								4	4
<b>Adjusted Bank Balance</b>	<b>1,429</b>	<b>48</b>	<b>804</b>	<b>285</b>	<b>146</b>	<b>-</b>	<b>1,233</b>	<b>4</b>	<b>3,948</b>
GL Balance	\$ 1,429	\$ 48	\$ 804	\$ 285	\$ 146	\$ -	\$ 1,233	\$ 4	\$ 3,948
<b>Number of Outstanding Checks</b>	<b>172</b>	<b>82</b>		<b>209</b>	<b>68</b>				<b>531</b>

**Seton Medical Center**  
**Bank Reconciliation Summary**  
**November 30, 2018**  
**\$ in 000's**

Bank Account No. (last 4 digits)						Debtor
	AP Disbursement	Payroll	Lockbox/GR	FSA	Petty Cash Total	Total
	6365	3001	2902 / 3887	2289	N/A	
<b>Balance Per Bank</b>	\$ 7,057	\$ 1,203	\$ 1,053	\$ -		\$ 9,312
<b>Additive Items:</b>						
Deposits in Transit			50			50
Other Additive Items		24	222			246
						-
<b>Subtractive Items:</b>						
Outstanding Checks	(1,669)	(125)				(1,793)
Other Subtractive Items			(354)			(354)
						-
<b>Reclassifications</b>						-
Negative book balance reclassified to AP						-
						-
<b>Petty Cash</b>					4	4
						-
<b>Adjusted Bank Balance</b>	<b>5,388</b>	<b>1,102</b>	<b>971</b>	<b>-</b>	<b>4</b>	<b>7,465</b>
GL Balance	\$ 5,388	\$ 1,102	\$ 971	\$ -	\$ 4	\$ 7,465
<b>Number of Outstanding Checks</b>	<b>250</b>	<b>121</b>				<b>371</b>



Seton Medical Center Coasts  
Bank Reconciliation Summary  
November 30, 2018  
\$ in 000's

Bank Account No. (last 4 digits)	SMCC -				Debtor Total
	AP Disbursement	Lockbox/GR	Patient Trust	FSA	
	6834	02907 / 3882	12907		
<b>Balance Per Bank</b>	\$ 1,315	\$ 74	\$ 22	\$ -	\$ 1,412
<b>Additive Items:</b>					-
Deposits in Transit					-
Other Additive Items		1			1
<b>Subtractive Items:</b>					-
Outstanding Checks	(45)		(4)		(49)
Other Subtractive Items	(0)	(49)	(3)		(53)
<b>Reclassifications</b>					-
Negative book balance reclassified to AP					-
<b>Petty Cash</b>					-
<b>Adjusted Bank Balance</b>	<b>1,270</b>	<b>26</b>	<b>15</b>	<b>-</b>	<b>1,311</b>
GL Balance	\$ 1,270	\$ 26	\$ 15	\$ -	\$ 1,311
<b>Number of Outstanding Checks</b>	<b>35</b>		<b>5</b>		<b>40</b>

O'Connor Hospital Foundation  
Bank Reconciliation Summary  
November 30, 2018  
\$ in 000's

Bank Account No. (last 4 digits)	OCH Foundation	OCH Foundation - Investment	Debtor Total
	3433	2-037	
<b>Balance Per Bank</b>	\$ 1,476	\$ 242	\$ 1,719
<b>Additive Items:</b>			-
Deposits in Transit			-
Other Additive Items			-
<b>Subtractive Items:</b>			-
Outstanding Checks			-
Other Subtractive Items	(0)		(0)
<b>Reclassifications</b>			-
Negative book balance reclassified to AP			-
<b>Petty Cash</b>			-
<b>Adjusted Bank Balance</b>	<b>1,476</b>	<b>242</b>	<b>1,718</b>
GL Balance	\$ 1,476	\$ 242	\$ 1,718
<b>Number of Outstanding Checks</b>			-

Saint Louise Regional Hospital Foundation  
Bank Reconciliation Summary  
November 30, 2018  
\$ in 000's

	Debtor Total
<b>Bank Account No. (last 4 digits)</b>	2521
<b><u>Balance Per Bank</u></b>	<b>\$ 656</b>
<b>Additive Items:</b>	
Deposits in Transit	
Other Additive Items	3
<b>Subtractive Items:</b>	
Outstanding Checks	
Other Subtractive Items	
<b>Reclassifications</b>	
Negative book balance reclassified to AP	
<b>Petty Cash</b>	
<b>Adjusted Bank Balance</b>	<b>659</b>
GL Balance	\$ 659
<b>Number of Outstanding Checks</b>	

St. Francis Medical Center of Lynwood Foundation  
Bank Reconciliation Summary  
November 30, 2018  
\$ in 000's

	Debtor Total
Bank Account No. (last 4 digits)	2809
<b>Balance Per Bank</b>	\$ 946
<b>Additive Items:</b>	
Deposits in Transit	
Other Additive Items	
<b>Subtractive Items:</b>	
Outstanding Checks	
Other Subtractive Items	(16)
<b>Reclassifications</b>	
Negative book balance reclassified to AP	
<b>Petty Cash</b>	
<b>Adjusted Bank Balance</b>	930
GL Balance	\$ 930
<b>Number of Outstanding Checks</b>	

St Vincent Medical Center Foundation  
Bank Reconciliation Summary  
November 30, 2018  
\$ in 000's

	Debtor Total
<b>Bank Account No. (last 4 digits)</b>	3025 / 1162
<b><u>Balance Per Bank</u></b>	\$ 1,737
<b>Additive Items:</b>	
Deposits in Transit	49
Other Additive Items	
<b>Subtractive Items:</b>	
Outstanding Checks	
Other Subtractive Items	
<b>Reclassifications</b>	
Negative book balance reclassified to AP	
<b>Petty Cash</b>	
<b>Adjusted Bank Balance</b>	<b>1,786</b>
GL Balance	\$ 1,786
<b>Number of Outstanding Checks</b>	

St. Vincent Dialysis Center, Inc.  
Bank Reconciliation Summary  
November 30, 2018  
\$ in 000's

	Debtor Total
Bank Account No. (last 4 digits)	8921
<b>Balance Per Bank</b>	<b>\$ 1,185</b>
<b>Additive Items:</b>	
Deposits in Transit	96
Other Additive Items	
<b>Subtractive Items:</b>	
Outstanding Checks	
Other Subtractive Items	(0)
<b>Reclassifications</b>	
Negative book balance reclassified to AP	
<b>Petty Cash</b>	
<b>Adjusted Bank Balance</b>	<b>1,280</b>
GL Balance	\$ 1,280
<b>Number of Outstanding Checks</b>	

Seton Medical Center Foundation  
Bank Reconciliation Summary  
November 30, 2018  
\$ in 000's

Bank Account No. (last 4 digits)	SMC Foundation		SMC Foundation - SVCS		Debtor Total
	2260		0089		
<b>Balance Per Bank</b>	\$ 5,560		\$ 424		\$ 5,984
<b>Additive Items:</b>					
Deposits in Transit					-
Other Additive Items	327				327
<b>Subtractive Items:</b>					
Outstanding Checks					-
Other Subtractive Items	(117)		(424)		(541)
<b>Reclassifications</b>					
Negative book balance reclassified to AP					-
<b>Petty Cash</b>					-
<b>Adjusted Bank Balance</b>	<b>5,770</b>		<b>-</b>		<b>5,770</b>
GL Balance	\$ 5,770		\$ -		\$ 5,770
<b>Number of Outstanding Checks</b>					-

Verity Business Services  
Bank Reconciliation Summary  
November 30, 2018  
\$ in 000's

Bank Account No. (last 4 digits)	AP Disbursement			Payroll		FSA		Debtor Total	
	6402	2982	3192						
<b>Balance Per Bank</b>	\$ 2,448	\$ 8	\$ -	\$ 2,456					
<b>Additive Items:</b>									
Deposits in Transit									
Other Additive Items		1		1					
<b>Subtractive Items:</b>									
Outstanding Checks	(645)	(3)		(648)					
Other Subtractive Items									
<b>Reclassifications</b>									
Negative book balance reclassified to AP									
<b>Petty Cash</b>									
<b>Adjusted Bank Balance</b>	<b>1,802</b>	<b>6</b>	<b>-</b>	<b>1,809</b>					
GL Balance	\$ 1,802	\$ 6	\$ -	\$ 1,809					
<b>Number of Outstanding Checks</b>	<b>28</b>	<b>2</b>		<b>30</b>					



Verity Medical Foundation  
Bank Reconciliation Summary  
November 30, 2018  
\$ in 000's

Bank Account No. (last 4 digits)	VMF - Checking	VMF - Payroll ZBA	Petty Cash	Debtor Total
	9996	0010	Total	Total
<b>Balance Per Bank</b>	\$ 9,521	\$ -		\$ 9,521
<b>Additive Items:</b>				-
Deposits in Transit				-
Other Additive Items	4			4
<b>Subtractive Items:</b>				-
Outstanding Checks	(806)			(806)
Other Subtractive Items				-
<b>Reclassifications</b>				-
Negative book balance reclassified to AP				-
<b>Petty Cash</b>			4	4
				-
<b>Adjusted Bank Balance</b>	<b>8,719</b>	<b>-</b>	<b>4</b>	<b>8,722</b>
GL Balance	\$ 8,719	\$ -	\$ 4	\$ 8,722
<b>Number of Outstanding Checks</b>	<b>345</b>			<b>345</b>

Verity Holdings, LLC  
Bank Reconciliation Summary  
November 30, 2018  
\$ in 000's

Bank Account No. (last 4 digits)	AP Disbursement	MOB	Operating	Saving	Debtor Total
	1597	1248	1970	1975	
<b>Balance Per Bank</b>	\$ 6,430	\$ 461	\$ -	\$ -	\$ 6,891
<b>Additive Items:</b>					-
Deposits in Transit					-
Other Additive Items	5				5
<b>Subtractive Items:</b>					-
Outstanding Checks	(85)				(85)
Other Subtractive Items		(4)			(4)
<b>Reclassifications</b>					-
Negative book balance reclassified to AP					-
<b>Petty Cash</b>					-
<b>Adjusted Bank Balance</b>	<b>6,350</b>	<b>457</b>	<b>-</b>	<b>-</b>	<b>6,807</b>
GL Balance	\$ 6,350	\$ 457	\$ -	\$ -	\$ 6,807
<b>Number of Outstanding Checks</b>	<b>31</b>				<b>31</b>

**Verity Health System, Inc.**  
**Notes on Bank Reconciliations**  
**November 30, 2018**

1. De Paul Ventures, LLC and De Paul Ventures – San Jose Dialysis, LLC have no bank accounts. Therefore, there is no bank activity reported on the Verity Bank Account Summary or on the Verity Bank Account Cumulative Summary, and accordingly no bank reconciliations.
2. The following bank accounts were closed in September and October 2018. Since there was no activity for these accounts in November 2018, these accounts are not reported on the Bank Reconciliation Summary.

<b>Account name</b>	<b>Last four of account #</b>
SMC Foundation - TCB	#XXXXXX8521
SMCC - Patient Trust - TCB	#XXXXXX3611

3. The following bank accounts were closed in November 2018:

<b>Account name</b>	<b>Last four of account #</b>
OCH - FSA	#XXXXXX2284
SLRH - FSA	#XXXXXX2307
SMC - FSA	#XXXXXX2289
SMCC - FSA	#XXXXXX2302
SFMC - FSA	#XXXXXX2487
SVMC - FSA	#XXXXXX2062
VBS - FSA	#XXXXXX3192
VH - Operating	#XXXXXX1970
VH - Savings	#XXXXXX1975

4. The following bank account was closed in December 2018:

<b>Account name</b>	<b>Last four of account #</b>
VMF - Payroll ZBA - Wells Fargo	#XXXXXX0010

**Verity Status of Payments to Secured Creditors, Lessors, And Other Parties to Executory Contracts**

For the month ending 11/30/2018

\$ in 000's

#	Creditor, Lessor, Etc.	Frequency of Payments (Mo/Qtr)	Amount of Payment	Post-petition Payments Not Made (Number) <sup>(A)</sup>	Total Due Not Paid According to Postpetition Terms
<b>Secured Debt Holders</b>					
1	Wells Fargo - 2005 Bonds	Monthly	\$1,226	-	-
2	US Bank 2015 Notes	Monthly	1,044	-	-
3	Verity MOB Financing, LLC	Monthly	409	-	-
4	US Bank 2017 Notes	Monthly	254	-	-
5	Ally Bank <sup>(B)</sup>	Various	107	-	-
	<b>Subtotal</b>		<b>\$3,041</b>	-	-
<b>Top 20 Vendors</b>					
1	Healthnow Administrative Services	Various	\$9,980	-	-
2	Transamerica	Various	5,793	-	-
3	Medline Industries, Inc.	Various	2,636	-	-
4	Cardinal Health	Various	2,446	-	-
5	Mckesson Specialty Care Distribution	Various	2,414	-	-
6	Verity Medical Group	Various	2,091	-	-
7	San Jose Medical Clinic, Inc	Various	1,967	-	-
8	Sodexo, Inc & Affiliates	Various	1,341	-	-
9	Applecare Medical Group	Various	1,240	-	-
10	Stanford Health Care	Various	1,106	-	-
11	Delta Dental	Various	808	-	-
12	Los Angeles Department Of Water And Power	Various	776	-	-
13	California Dept Of Public Health	Various	720	-	-
14	Sports, Orthopedic & Rehabilitation Associates	Various	680	-	-
15	Medtronic USA Inc	Various	678	-	-
16	Boston Scientific Corp	Various	677	-	-
17	Quadramed Corporation	Various	622	-	-
18	Rightsourcing Inc	Various	603	-	-
19	American Red Cross	Various	575	-	-
20	Stryker Orthopedics	Various	469	-	-
	<b>Subtotal</b>		<b>\$37,621</b>	-	-

**Notes**

A) See Notes after XI. Questionnaire.

B) In addition to the above payments to Ally Bank, Verity also submits its cash inflows to the Debtors' DIP Lender Ally Bank on a daily basis even when there is no DIP balance outstanding. When this occurs, Ally Bank returns the funds to Verity. To the extent funds are sent to and received from Ally Bank in the same month in the case of a zero DIP balance, the transfers will net out to zero.

Creditor, Lessor, Etc.	Frequency of Payments (Mo/Qtr)	Amount of Payment	Post-Petition payments not made (Number)	Total Due not paid according to postpetition terms
SEE PRIOR PAGE				
TOTAL DUE:				

III. TAX LIABILITIES - \$ in 000's

FOR THE REPORTING PERIOD - \$ in 000's:

Gross Sales Subject to Sales Tax:	\$	516
Total Wages Paid:	\$	58,332

	Total Post-Petition Amounts Owning	Amount Delinquent	Date Delinquent Amount Due
Federal Withholding	\$ 58	\$ -	
State Withholding	36	-	
FICA- Employee/Employer Share	1,103	-	
State Unemployment	62	-	
State Disability Insurance	-	-	
Sales and Use	47	-	
Real Property	669		
Other:			
TOTAL	\$ 1,975	-	

	*Accounts Payable	Patient Receivables
	Post-Petition	Combined Pre and Post Petition
30 days or less	\$ 5,266	\$102,506
31 - 60 days	432	\$28,279
61 - 90 days	206	\$15,897
91 - 120 days	337	\$12,843
Over 120 days	-	\$42,438
<b>TOTAL:</b>	<b>\$ 6,241</b>	<b>\$ 201,963</b>

V. INSURANCE COVERAGE

	Name of Carrier	Amount of Coverage	Policy Expiration Date	Premium Paid Through (Date)
General Liability				
Worker's Compensation	<b>See Schedule Attached</b>			
Casualty				
Vehicle				
Others:				

VI. UNITED STATES TRUSTEE QUARTERLY FEES - \$ in 000's  
 (TOTAL PAYMENTS)

Quarterly Period Ending (Date)	Total Disbursements	Quarterly Fees	Date Paid	Amount Paid	Quarterly Fees Still Owing
30-Sep-2018	\$ 89,411	\$ 898	31-Oct-2018	\$ 898	\$ -
					-
					-
					-
					-
					-
					-
					-
					-
					-
					-
					-
					-
					-
					-
					-
					-
					-
					-
					-
		\$ 898		\$ 898	\$ -

(A) The Debtors did not initially receive an invoice from the U.S. Trustee for quarterly fees for De Paul Ventures – San Jose Dialysis, LLC and therefore \$0.325 thousand of the reported amount paid was paid on November 30, 2018.

See Notes after Section XI., Questionnaire.

Debtor	Account Used	Aggregate Insider Compensation Paid
Verity Health System of California, Inc.	XXXXXX1785	\$ 410,905
O'Connor Hospital	XXXXXX3007	\$ 96,252
Saint Louise Regional Hospital	XXXXXX7575	\$ 16,585
St. Francis Medical Center	XXXXXX3012	\$ 40,572
St. Vincent Medical Center	XXXXXX3017	\$ 90,661
Seton Medical Center	XXXXXX3001	\$ 65,515
O'Connor Hospital Foundation		-
Saint Louise Regional Hospital Foundation		-
St. Francis Medical Center of Lynwood Foundation		-
St. Vincent Foundation		-
St. Vincent Dialysis Center, Inc.		-
Seton Medical Center Foundation		-
Verity Business Services		-
Verity Medical Foundation	XXXXXX9996	\$ 52,889
Verity Holdings, LLC		-
DePaul Ventures, LLC		-
DePaul Ventures - San Jose Dialysis, LLC		-
		\$ 773,379

VIII SCHEDULE OF OTHER AMOUNTS PAID TO INSIDERS

Debtor	Account Used	Aggregate Insider Other Amounts Paid (a)
Verity Health System of California, Inc.	XXXXXX6440	\$ 42,431
O'Connor Hospital	XXXXXX6389	\$ 158
Saint Louise Regional Hospital	XXXXXX6421	\$ 11,000
St. Francis Medical Center	XXXXXX6407	\$ -
St. Vincent Medical Center	XXXXXX6426	\$ 7,815
Seton Medical Center	XXXXXX6365	\$ 20,100
O'Connor Hospital Foundation		\$ -
Saint Louise Regional Hospital Foundation		\$ -
St. Francis Medical Center of Lynwood Foundation		\$ -
St. Vincent Foundation		\$ -
St. Vincent Dialysis Center, Inc.		\$ -
Seton Medical Center Foundation		\$ -
Verity Business Services		\$ -
Verity Medical Foundation		\$ -
Verity Holdings, LLC		\$ -
DePaul Ventures, LLC		\$ -
DePaul Ventures - San Jose Dialysis, LLC		\$ -
		\$ 81,504

(a) For the Hospital Debtors, amounts represent payments made by the Hospitals to physician board members associated with medical directorships and on-call coverage provided. Such payments are not associated with services provided as a board member.

VERITY HEALTH SYSTEM  
CONSOLIDATING BALANCE SHEET - UNAUDITED  
AS OF NOVEMBER 30, 2018  
(In thousands)

	O'Connor Hospital	Saint Louis Regional Hospital	St. Francis Medical Center	St. Vincent Medical Center	Seton Medical Center	Seton Medical Center Coastside (Seton Medical Center)	System Office (Verity Health System of CA, Inc.)	System Elimination - Obligated Group	Obligated Group Subtotal	Non-Debtor A	Verity Business Services	DePaul Ventures (Includes DePaul Ventures - San Jose Dialysis, LLC)
<b>ASSETS</b>												
<b>CURRENT ASSETS:</b>												
Cash and cash equivalents	\$ 2,794	\$ 1,452	\$ 9,916	\$ 2,715	\$ 7,465	\$ 1,312	\$ 20,412	\$ -	\$ 46,066	\$ 10,127	\$ 1,809	\$ 1
Net patient accounts receivable	43,601	16,005	57,967	31,580	40,814	5,061	-	-	195,028	-	-	-
Due from government agencies	1,703	234	8,986	4,101	1,782	-	-	-	16,806	-	-	-
Due from related organizations	13,225	5,043	414,963	10,385	17,613	48	545,844	(951,143)	55,978	-	37,050	3,136
Other current assets	14,606	4,920	30,029	13,957	9,334	357	10,802	-	84,005	7,592	157	377
Other restricted assets	-	-	-	-	-	-	-	-	-	-	-	-
<b>Total current assets</b>	<b>75,929</b>	<b>27,654</b>	<b>521,861</b>	<b>62,738</b>	<b>77,008</b>	<b>6,778</b>	<b>577,058</b>	<b>(951,143)</b>	<b>397,883</b>	<b>17,719</b>	<b>39,016</b>	<b>3,514</b>
<b>ASSETS LIMITED AS TO USE:</b>												
Other investments	-	-	-	3,095	-	-	-	-	3,095	35,787	-	-
Under bond indenture agreements	-	-	-	-	35,272	-	24,525	-	59,797	-	-	-
<b>Total assets limited as to use</b>	<b>-</b>	<b>-</b>	<b>-</b>	<b>3,095</b>	<b>35,272</b>	<b>-</b>	<b>24,525</b>	<b>-</b>	<b>62,892</b>	<b>35,787</b>	<b>-</b>	<b>-</b>
<b>PROPERTY AND EQUIPMENT, Net</b>	<b>29,766</b>	<b>13,886</b>	<b>89,601</b>	<b>46,885</b>	<b>43,713</b>	<b>678</b>	<b>24,855</b>	<b>-</b>	<b>249,384</b>	<b>-</b>	<b>1,617</b>	<b>-</b>
<b>OTHER LONG-TERM ASSETS</b>	<b>570</b>	<b>7</b>	<b>177</b>	<b>34</b>	<b>233</b>	<b>-</b>	<b>5,021</b>	<b>-</b>	<b>6,042</b>	<b>-</b>	<b>-</b>	<b>21</b>
<b>TOTAL ASSETS</b>	<b>\$ 106,265</b>	<b>\$ 41,547</b>	<b>\$ 611,639</b>	<b>\$ 112,752</b>	<b>\$ 156,226</b>	<b>\$ 7,456</b>	<b>\$ 631,459</b>	<b>\$ (951,143)</b>	<b>\$ 716,201</b>	<b>\$ 53,506</b>	<b>\$ 40,633</b>	<b>\$ 3,535</b>
<b>LIABILITIES AND NET (DEFICIT) ASSETS</b>												
<b>CURRENT LIABILITIES:</b>												
Accounts payable	\$ 22,587	\$ 5,181	\$ 17,546	\$ 22,926	\$ 15,616	\$ 426	\$ 18,592	\$ -	\$ 102,874	\$ 13	\$ 5,365	\$ -
Current portion of long-term debt, net of debt issuance costs	774	469	4,076	867	1,801	-	159,126	-	167,113	-	-	-
Due to government agencies	161	2	2,413	1,104	245	-	-	-	3,925	-	-	-
Accrued expenses and other current liabilities	22,843	7,619	71,621	36,376	44,365	2,598	127,079	-	312,501	15,877	7,738	-
Due to related organizations	282,449	76,737	3,481	284,866	184,672	25,406	226,201	(951,143)	132,669	-	25,597	2
<b>Total current liabilities</b>	<b>328,814</b>	<b>90,008</b>	<b>99,137</b>	<b>346,139</b>	<b>246,699</b>	<b>28,430</b>	<b>530,998</b>	<b>(951,143)</b>	<b>719,082</b>	<b>15,890</b>	<b>38,700</b>	<b>2</b>
<b>OTHER LIABILITIES</b>												
Pension and other long-term liabilities	41,667	4,576	78,517	59,954	2,479	25	46,865	-	234,083	32,756	-	-
<b>Total other liabilities</b>	<b>41,667</b>	<b>4,576</b>	<b>78,517</b>	<b>59,954</b>	<b>2,479</b>	<b>25</b>	<b>46,865</b>	<b>-</b>	<b>234,083</b>	<b>32,756</b>	<b>-</b>	<b>-</b>
<b>LONG-TERM DEBT, Net of current portion and debt issuance costs</b>	<b>47,507</b>	<b>28,776</b>	<b>63,436</b>	<b>53,181</b>	<b>96,106</b>	<b>-</b>	<b>40,432</b>	<b>-</b>	<b>329,438</b>	<b>-</b>	<b>-</b>	<b>-</b>
<b>Total liabilities</b>	<b>417,988</b>	<b>123,360</b>	<b>241,090</b>	<b>459,274</b>	<b>345,284</b>	<b>28,455</b>	<b>618,295</b>	<b>(951,143)</b>	<b>1,282,603</b>	<b>48,646</b>	<b>38,700</b>	<b>2</b>
<b>NET (DEFICIT) ASSETS:</b>												
Unrestricted	(311,723)	(81,813)	370,491	(349,840)	(189,058)	(20,999)	13,164	-	(569,778)	4,860	1,933	3,533
Temporarily restricted	-	-	58	523	-	-	-	-	581	-	-	-
Permanently restricted	-	-	-	2,795	-	-	-	-	2,795	-	-	-
<b>Total net (deficit) assets</b>	<b>(311,723)</b>	<b>(81,813)</b>	<b>370,549</b>	<b>(346,522)</b>	<b>(189,058)</b>	<b>(20,999)</b>	<b>13,164</b>	<b>-</b>	<b>(566,402)</b>	<b>4,860</b>	<b>1,933</b>	<b>3,533</b>
<b>TOTAL LIABILITIES AND NET (DEFICIT) ASSETS</b>	<b>\$ 106,265</b>	<b>\$ 41,547</b>	<b>\$ 611,639</b>	<b>\$ 112,752</b>	<b>\$ 156,226</b>	<b>\$ 7,456</b>	<b>\$ 631,459</b>	<b>\$ (951,143)</b>	<b>\$ 716,201</b>	<b>\$ 53,506</b>	<b>\$ 40,633</b>	<b>\$ 3,535</b>



VERITY HEALTH SYSTEM  
CONSOLIDATING BALANCE SHEET - UNAUDITED  
AS OF NOVEMBER 30, 2018  
(In thousands)

	St. Vincent Dialysis Center Inc.	Verity Medical Foundation	O'Connor Hospital Foundation	Seton Medical Center Foundation	St. Francis Medical Center of Lynwood Foundation	Saint Louise Regional Hospital Foundation	St. Vincent Foundation	Verity Holdings, LLC	Non-Debtor B	System Elimination - Non Obligated Group	Verity Total
<b>ASSETS</b>											
<b>CURRENT ASSETS:</b>											
Cash and cash equivalents	\$ 1,280	\$ 8,722	\$ 235	\$ 562	\$ 209	\$ 168	\$ 191	\$ 7,667	\$ 15	\$ -	\$ 77,052
Net patient accounts receivable	762	6,172	-	-	-	-	-	-	-	-	201,962
Due from government agencies	-	-	-	-	-	-	-	-	-	-	16,806
Due from related organizations	2,604	4,520	2	7	4	5	12,502	72,838	-	(188,646)	-
Other current assets	92	4,154	12	106	3,280	39	1,817	1,010	-	(6,548)	96,093
Other restricted assets	-	-	-	-	-	-	-	1,259	-	-	1,259
<b>Total current assets</b>	<b>4,738</b>	<b>23,568</b>	<b>249</b>	<b>675</b>	<b>3,493</b>	<b>212</b>	<b>14,510</b>	<b>82,774</b>	<b>15</b>	<b>(195,194)</b>	<b>393,172</b>
<b>ASSETS LIMITED AS TO USE:</b>											
Other investments	-	-	1,483	5,326	721	491	4,197	-	-	-	51,100
Under bond indenture agreements	-	-	-	-	-	-	-	-	-	-	59,797
<b>Total assets limited as to use</b>	<b>-</b>	<b>-</b>	<b>1,483</b>	<b>5,326</b>	<b>721</b>	<b>491</b>	<b>4,197</b>	<b>-</b>	<b>-</b>	<b>-</b>	<b>110,897</b>
<b>PROPERTY AND EQUIPMENT, Net</b>	<b>204</b>	<b>5,014</b>	<b>-</b>	<b>-</b>	<b>-</b>	<b>-</b>	<b>-</b>	<b>22,205</b>	<b>-</b>	<b>-</b>	<b>278,424</b>
<b>OTHER LONG-TERM ASSETS</b>	<b>-</b>	<b>2,285</b>	<b>-</b>	<b>-</b>	<b>-</b>	<b>-</b>	<b>948</b>	<b>748</b>	<b>-</b>	<b>(1,239)</b>	<b>8,805</b>
<b>TOTAL ASSETS</b>	<b>\$ 4,942</b>	<b>\$ 30,867</b>	<b>\$ 1,732</b>	<b>\$ 6,001</b>	<b>\$ 4,214</b>	<b>\$ 703</b>	<b>\$ 19,655</b>	<b>\$ 105,727</b>	<b>\$ 15</b>	<b>\$ (196,433)</b>	<b>\$ 791,298</b>
<b>LIABILITIES AND NET (DEFICIT) ASSETS</b>											
<b>CURRENT LIABILITIES:</b>											
Accounts payable	\$ -	\$ 5,515	\$ -	\$ -	\$ -	\$ -	\$ -	\$ 1,403	\$ -	\$ -	\$ 115,170
Current portion of long-term debt, net of debt issuance costs	-	-	-	-	-	-	-	101	-	-	167,214
Due to government agencies	-	-	-	-	-	-	-	-	-	-	3,925
Accrued expenses and other current liabilities	50	11,220	-	-	-	4	-	3,760	-	(7,768)	343,382
Due to related organizations	8,954	-	7,297	1,029	8,583	5,068	747	(1,300)	-	(188,646)	-
<b>Total current liabilities</b>	<b>9,004</b>	<b>16,735</b>	<b>7,297</b>	<b>1,029</b>	<b>8,583</b>	<b>5,072</b>	<b>747</b>	<b>3,964</b>	<b>-</b>	<b>(196,414)</b>	<b>629,691</b>
<b>OTHER LIABILITIES</b>											
Pension and other long-term liabilities	-	6,440	70	-	-	-	96	16,903	-	(19)	290,329
<b>Total other liabilities</b>	<b>-</b>	<b>6,440</b>	<b>70</b>	<b>-</b>	<b>-</b>	<b>-</b>	<b>96</b>	<b>16,903</b>	<b>-</b>	<b>(19)</b>	<b>290,329</b>
<b>LONG-TERM DEBT, Net of current portion and debt issuance costs</b>	<b>-</b>	<b>-</b>	<b>-</b>	<b>-</b>	<b>-</b>	<b>-</b>	<b>-</b>	<b>111,184</b>	<b>-</b>	<b>-</b>	<b>440,622</b>
<b>Total liabilities</b>	<b>9,004</b>	<b>23,175</b>	<b>7,367</b>	<b>1,029</b>	<b>8,583</b>	<b>5,072</b>	<b>843</b>	<b>132,051</b>	<b>-</b>	<b>(196,433)</b>	<b>1,360,642</b>
<b>NET (DEFICIT) ASSETS:</b>											
Unrestricted	(4,062)	7,692	(6,888)	(279)	(8,370)	(4,876)	11,950	(27,583)	15	-	(591,853)
Temporarily restricted	-	-	918	2,533	4,001	507	4,425	1,259	-	-	14,224
Permanently restricted	-	-	335	2,718	-	-	2,437	-	-	-	8,285
<b>Total net (deficit) assets</b>	<b>(4,062)</b>	<b>7,692</b>	<b>(5,635)</b>	<b>4,972</b>	<b>(4,369)</b>	<b>(4,369)</b>	<b>18,812</b>	<b>(26,324)</b>	<b>15</b>	<b>-</b>	<b>(569,344)</b>
<b>TOTAL LIABILITIES AND NET (DEFICIT) ASSETS</b>	<b>\$ 4,942</b>	<b>\$ 30,867</b>	<b>\$ 1,732</b>	<b>\$ 6,001</b>	<b>\$ 4,214</b>	<b>\$ 703</b>	<b>\$ 19,655</b>	<b>\$ 105,727</b>	<b>\$ 15</b>	<b>\$ (196,433)</b>	<b>\$ 791,298</b>

VERITY HEALTH SYSTEM  
STATEMENT OF OPERATIONS - UNAUDITED  
FOR THE MONTH ENDED NOVEMBER 30, 2018  
(In thousands)

	O'Connor Hospital	Saint Louise Regional Hospital	St. Francis Medical Center	St. Vincent Medical Center	Seton Medical Center	Seton Medical Center Coastsides (Seton Medical Center)	System Office (Verity Health System of CA, Inc.)	System Elimination - Obligated Group	Obligated Group Subtotal	Non-Debtor A	Verity Business Services	DePaul Ventures (Includes DePaul Ventures - San Jose Dialysis, LLC)
<b>UNRESTRICTED REVENUES AND OTHER SUPPORT:</b>												
Net patient service revenue	\$ 18,134	\$ 5,214	\$ 28,506	\$ 13,702	\$ 21,040	\$ 1,685	\$ -	\$ (1,738)	\$ 86,543	\$ -	\$ -	\$ -
Provision for doubtful accounts	460	846	562	16	(778)	(57)	-	-	1,049	-	-	-
Net patient service revenue less provision for doubtful accounts	<b>18,594</b>	<b>6,060</b>	<b>29,068</b>	<b>13,718</b>	<b>20,262</b>	<b>1,628</b>	-	<b>(1,738)</b>	<b>87,592</b>	-	-	-
Premium revenue	-	-	8,396	(1,456)	-	-	-	(54)	6,886	-	-	-
Other revenue	343	17	143	111	43	32	13,092	(13,092)	689	1,079	4,278	-
Contributions	3	6	212	1	-	-	-	-	222	-	-	-
<b>Total unrestricted revenues and other support</b>	<b>18,940</b>	<b>6,083</b>	<b>37,819</b>	<b>12,374</b>	<b>20,305</b>	<b>1,660</b>	<b>13,092</b>	<b>(14,884)</b>	<b>95,389</b>	<b>1,079</b>	<b>4,278</b>	-
<b>EXPENSES:</b>												
Salaries and benefits	12,642	4,533	18,446	8,954	12,350	1,394	4,521	(1,738)	61,102	-	2,537	-
Supplies	3,575	587	3,392	3,142	2,553	135	7	-	13,391	-	17	-
Purchased services, medical claims and other	8,068	2,722	17,735	7,766	6,203	560	6,349	(13,146)	36,257	1,106	1,702	1
Depreciation and amortization	537	140	738	495	416	10	40	-	2,376	-	22	-
Interest, net	188	135	314	220	431	-	2,052	-	3,340	-	-	-
<b>Total expenses</b>	<b>25,010</b>	<b>8,117</b>	<b>40,625</b>	<b>20,577</b>	<b>21,953</b>	<b>2,099</b>	<b>12,969</b>	<b>(14,884)</b>	<b>116,466</b>	<b>1,106</b>	<b>4,278</b>	<b>1</b>
<b>OPERATING (LOSS) INCOME</b>	<b>(6,070)</b>	<b>(2,035)</b>	<b>(2,806)</b>	<b>(8,202)</b>	<b>(1,649)</b>	<b>(439)</b>	<b>122</b>	<b>-</b>	<b>(21,079)</b>	<b>(27)</b>	<b>-</b>	<b>(1)</b>
INVESTMENT INCOME (LOSS)	-	-	-	-	-	-	(122)	-	(122)	57	-	-
<b>EXCESS (DEFICIT) OF REVENUES OVER EXPENSES</b>	<b>\$ (6,070)</b>	<b>\$ (2,035)</b>	<b>\$ (2,806)</b>	<b>\$ (8,202)</b>	<b>\$ (1,649)</b>	<b>\$ (439)</b>	<b>\$ -</b>	<b>\$ -</b>	<b>\$ (21,201)</b>	<b>\$ 30</b>	<b>\$ -</b>	<b>\$ (1)</b>

VERITY HEALTH SYSTEM  
STATEMENT OF OPERATIONS - UNAUDITED  
FOR THE MONTH ENDED NOVEMBER 30, 2018  
(In thousands)

	St. Vincent Dialysis Center Inc.	Verity Medical Foundation	O'Connor Hospital Foundation	Seton Medical Center Foundation	St. Francis Medical Center of Lynwood Foundation	Saint Louise Regional Hospital Foundation	St. Vincent Foundation	Verity Holdings, LLC	Non-Debtor B	System Elimination - Non Obligated Group	Verity Total
<b>UNRESTRICTED REVENUES AND OTHER SUPPORT:</b>											
Net patient service revenue	\$ 324	\$ 4,117	\$ -	\$ -	\$ -	\$ -	\$ -	\$ -	\$ -	\$ (152)	\$ 90,832
Provision for doubtful accounts	(5)	(76)	-	-	-	-	-	-	-	-	968
Net patient service revenue less provision for doubtful accounts	<b>319</b>	<b>4,041</b>	-	-	-	-	-	-	-	<b>(152)</b>	<b>91,800</b>
Premium revenue	-	1,598	-	-	-	-	-	-	-	-	8,484
Other revenue	-	1,013	-	-	-	-	-	1,541	-	(6,886)	1,714
Contributions	-	-	-	-	-	-	-	180	-	-	402
<b>Total unrestricted revenues and other support</b>	<b>319</b>	<b>6,652</b>	-	-	-	-	-	<b>1,721</b>	-	<b>(7,038)</b>	<b>102,400</b>
<b>EXPENSES:</b>											
Salaries and benefits	252	3,073	15	12	34	11	16	(34)	-	(706)	66,312
Supplies	87	1,392	-	-	-	-	-	8	-	-	14,895
Purchased services, medical claims and other	38	8,446	2	(7)	3	2	2	792	-	(6,332)	42,012
Depreciation and amortization	2	363	-	-	-	-	-	71	-	-	2,834
Interest, net	-	2	-	-	-	-	-	727	-	-	4,069
<b>Total expenses</b>	<b>379</b>	<b>13,276</b>	<b>17</b>	<b>5</b>	<b>37</b>	<b>13</b>	<b>18</b>	<b>1,564</b>	-	<b>(7,038)</b>	<b>130,122</b>
<b>OPERATING (LOSS) INCOME</b>	<b>(59)</b>	<b>(6,623)</b>	<b>(18)</b>	<b>(4)</b>	<b>(37)</b>	<b>(14)</b>	<b>(19)</b>	<b>157</b>	-	-	<b>(27,724)</b>
INVESTMENT INCOME (LOSS)	1	-	1	6	1	-	1	-	-	-	(55)
<b>EXCESS (DEFICIT) OF REVENUES OVER EXPENSES</b>	<b>\$ (58)</b>	<b>\$ (6,623)</b>	<b>\$ (17)</b>	<b>\$ 2</b>	<b>\$ (36)</b>	<b>\$ (14)</b>	<b>\$ (18)</b>	<b>\$ 157</b>	<b>\$ -</b>	<b>\$ -</b>	<b>(27,779)</b>

VERITY HEALTH SYSTEM  
STATEMENT OF OPERATIONS - UNAUDITED  
FOR THE THREE MONTHS ENDED NOVEMBER 30, 2018  
(In thousands)

	O'Connor Hospital	Saint Louise Regional Hospital	St. Francis Medical Center	St. Vincent Medical Center	Seton Medical Center	Seton Medical Center Coastsides (Seton Medical Center)	System Office (Verity Health System of CA, Inc.)	System Elimination - Obligated Group	Obligated Group Subtotal	Non-Debtor A	Verity Business Services	DePaul Ventures (Includes DePaul Ventures - San Jose Dialysis, LLC)
<b>UNRESTRICTED REVENUES AND OTHER SUPPORT:</b>												
Net patient service revenue	\$ 58,791	\$ 18,829	\$ 93,464	\$ 43,088	\$ 51,829	\$ 5,647	\$ -	\$ (4,467)	\$ 267,181	\$ -	\$ -	\$ -
Provision for doubtful accounts	(893)	216	(1,983)	(2,732)	(2,094)	(180)	-	-	(7,666)	-	-	-
Net patient service revenue less provision for doubtful accounts	<b>57,898</b>	<b>19,045</b>	<b>91,481</b>	<b>40,356</b>	<b>49,735</b>	<b>5,467</b>	-	<b>(4,467)</b>	<b>259,515</b>	-	-	-
Premium revenue	-	-	24,356	4,217	-	-	-	(153)	28,420	-	-	-
Other revenue	1,074	55	428	355	269	134	38,075	(38,068)	2,322	3,273	12,618	-
Contributions	6	11	715	24	2	-	-	-	758	-	-	-
<b>Total unrestricted revenues and other support</b>	<b>58,978</b>	<b>19,111</b>	<b>116,980</b>	<b>44,952</b>	<b>50,006</b>	<b>5,601</b>	<b>38,075</b>	<b>(42,688)</b>	<b>291,015</b>	<b>3,273</b>	<b>12,618</b>	-
<b>EXPENSES:</b>												
Salaries and benefits	39,052	14,017	55,721	27,215	37,214	4,331	13,661	(4,467)	186,744	-	7,469	-
Supplies	9,564	1,811	9,697	9,962	7,024	422	41	-	38,521	-	71	-
Purchased services, medical claims and other	23,477	7,614	51,658	27,091	18,019	1,574	19,405	(38,221)	110,617	3,812	5,009	3
Depreciation and amortization	1,610	419	2,175	1,497	1,261	30	120	-	7,112	-	69	-
Interest, net	566	406	940	660	1,294	-	5,380	-	9,246	-	-	-
<b>Total expenses</b>	<b>74,269</b>	<b>24,267</b>	<b>120,191</b>	<b>66,425</b>	<b>64,812</b>	<b>6,357</b>	<b>38,607</b>	<b>(42,688)</b>	<b>352,240</b>	<b>3,812</b>	<b>12,618</b>	<b>3</b>
<b>OPERATING (LOSS) INCOME</b>	<b>(15,291)</b>	<b>(5,156)</b>	<b>(3,211)</b>	<b>(21,473)</b>	<b>(14,806)</b>	<b>(756)</b>	<b>(532)</b>	<b>-</b>	<b>(61,225)</b>	<b>(539)</b>	<b>-</b>	<b>(3)</b>
INVESTMENT INCOME (LOSS)	-	-	-	-	-	-	534	-	534	134	-	-
<b>EXCESS (DEFICIT) OF REVENUES OVER EXPENSES</b>	<b>\$ (15,291)</b>	<b>\$ (5,156)</b>	<b>\$ (3,211)</b>	<b>\$ (21,473)</b>	<b>\$ (14,806)</b>	<b>\$ (756)</b>	<b>\$ 2</b>	<b>\$ -</b>	<b>\$ (60,691)</b>	<b>\$ (405)</b>	<b>\$ -</b>	<b>\$ (3)</b>

VERITY HEALTH SYSTEM  
STATEMENT OF OPERATIONS - UNAUDITED  
FOR THE THREE MONTHS ENDED NOVEMBER 30, 2018  
(In thousands)

	St. Vincent Dialysis Center Inc.	Verity Medical Foundation	O'Connor Hospital Foundation	Seton Medical Center Foundation	St. Francis Medical Center of Lynwood Foundation	Saint Louise Regional Hospital Foundation	St. Vincent Foundation	Verity Holdings, LLC	Non-Debtor B	System Elimination - Non Obligated Group	Verity Total
<b>UNRESTRICTED REVENUES AND OTHER SUPPORT:</b>											
Net patient service revenue	\$ 1,105	\$ 12,909	\$ -	\$ -	\$ -	\$ -	\$ -	\$ -	\$ -	\$ (378)	\$ 280,817
Provision for doubtful accounts	(106)	(260)	-	-	-	-	-	-	-	-	(8,032)
Net patient service revenue less provision for doubtful accounts	<b>999</b>	<b>12,649</b>	-	-	-	-	-	-	-	<b>(378)</b>	<b>272,785</b>
Premium revenue	-	4,827	-	-	-	-	-	-	-	-	33,247
Other revenue	-	2,822	-	-	-	-	-	3,737	-	(20,314)	4,458
Contributions	-	-	2	6	-	-	134	540	-	-	1,440
<b>Total unrestricted revenues and other support</b>	<b>999</b>	<b>20,298</b>	<b>2</b>	<b>6</b>	<b>-</b>	<b>-</b>	<b>134</b>	<b>4,277</b>	<b>-</b>	<b>(20,692)</b>	<b>311,930</b>
<b>EXPENSES:</b>											
Salaries and benefits	755	9,755	48	37	105	35	50	(9)	-	(2,041)	202,948
Supplies	336	4,906	-	(5)	-	-	-	26	-	-	43,855
Purchased services, medical claims and other	131	23,334	7	(4)	8	7	7	3,146	-	(18,652)	127,425
Depreciation and amortization	6	942	-	-	-	-	-	233	-	-	8,362
Interest, net	-	8	-	-	-	-	-	2,137	-	-	11,391
<b>Total expenses</b>	<b>1,228</b>	<b>38,945</b>	<b>55</b>	<b>28</b>	<b>113</b>	<b>42</b>	<b>57</b>	<b>5,533</b>	<b>-</b>	<b>(20,693)</b>	<b>393,981</b>
<b>OPERATING (LOSS) INCOME</b>	<b>(229)</b>	<b>(18,647)</b>	<b>(53)</b>	<b>(22)</b>	<b>(113)</b>	<b>(42)</b>	<b>77</b>	<b>(1,256)</b>	<b>-</b>	<b>1</b>	<b>(82,051)</b>
INVESTMENT INCOME (LOSS)	2	-	3	15	3	1	4	492	-	-	1,188
<b>EXCESS (DEFICIT) OF REVENUES OVER EXPENSES</b>	<b>\$ (227)</b>	<b>\$ (18,647)</b>	<b>\$ (50)</b>	<b>\$ (7)</b>	<b>\$ (110)</b>	<b>\$ (41)</b>	<b>\$ 81</b>	<b>\$ (764)</b>	<b>\$ -</b>	<b>\$ 1</b>	<b>\$ (80,863)</b>

XI. QUESTIONNAIRE

1. Has the debtor-in-possession made any payments on its pre-petition unsecured debt, except as have been authorized by the court? If "Yes", explain below: No Yes  
  x         

2. Has the debtor-in-possession during this reporting period provided compensation or remuneration to any officers, directors, principals, or other insiders without appropriate authorization? If "Yes", explain below: No Yes  
  x         

3. State what progress was made during the reporting period toward filing a plan of reorganization  
 The Debtors continue to work closely and collaboratively with the Official Committee of Unsecured Creditors and secured creditors on issues related to the sale of their assets and resolution of pending disputes with creditors, vendors, doctors, employees and other parties in interest. Once the sale of the Debtors' assets is more fully progressed, the Debtors will be able to adequately formulate a plan of reorganization.

4. Describe potential future developments which may have a significant impact on the case:  
 Pursuant to an order [Docket No. 724], the Debtors scheduled an auction in December 2018 for the sale of its assets in Santa Clara County, but no alternative bidders submitted bids and, therefore, Santa Clara County's stalking-horse bid was submitted to the Court as the winning bidder at a hearing on December 19, 2018. It is likely that the sale will close in late February or March 2019. The Debtors anticipate filing a bid procedures motion for its remaining assets in January 2019, with the goal of conducting auctions in February 2019, and a sale closing approximately in July or August 2019.

5. Attach copies of all Orders granting relief from the automatic stay that were entered during the reporting period.  
 Attached

6. Did you receive any exempt income this month, which is not set forth in the operating report? If "Yes", please set forth the amounts and sources of the income below. No Yes  
  x         

I, Anita Chou, declare under penalty of perjury that I have fully read and understood the foregoing debtor-in-possession operating report and that the information contained herein is true and complete to the best of my knowledge.

12/28/18  
 Date

  
 Principal for debtor-in-possession

**Notes**

Creditor, Lessor, Etc. Not Paid According to Postpetition Terms	Frequency of Payments (Mo/Qtr)	Post-Petition payments not made (Number)	Total Due not paid according to postpetition terms	Explanation
None	n/a	-	-	n/a
<b>TOTAL DUE:</b>			<b>0.00</b>	

VI. UNITED STATES TRUSTEE QUARTERLY FEES  
(TOTAL PAYMENTS - 1st QUARTERLY PERIOD)

Quarterly Period Ending (Date)	Debtor	Total Disbursements	Quarterly Fees	Date Paid	Amount Paid	Quarterly Fees Still Owing
30-Sep-2018	De Paul Ventures - San Jose Dialysis, LLC	-	-	30-Nov-2018	325.00	\$ -
		\$ -	\$ -		\$ 325.00	\$ -

(A) The Debtors' did not initially receive an invoice from the U.S. Trustee for the September 30, 2018 quarterly fees for De Paul Ventures - San Jose Dialysis, LLC. The Debtors have now received the invoice and have made the payment.

**Verity Health System of California, Inc.**  
**Summary of Insurance**  
**As of 11/30/18**



#	Insurance Coverage	Carrier	First Named Insured	Policy Period	Policy Number	Limits of Liability	Premium Paid Through (Date)
1	Storage Tank Liability	ACE American Insurance Company (Chubb)	O'Connor Hospital	6/30/18-6/30/19	G24668538 010	\$1,000,000 Per Storage Tank Incident \$2,000,000 Aggregate for ASTs \$2,000,000 Aggregate for USTs \$4,000,000 Aggregate Limit of Liability for All Storage Tank Incidents \$2,000,000 Aggregate Limit of Liability for Legal Defense Expenses \$6,000,000 Policy Aggregate	6/30/2019
2	Commercial Property	American Guarantee and Liability Insurance Company (Zurich)	Verity Health System of California, Inc.	7/1/18-7/1/19	ZMD7067455-00	\$1,000,000,000 Loss Limit	6/30/2019
3	Workers' Compensation and Employers Liability	Old Republic Insurance Company	Verity Health System of California, Inc.	7/1/18-7/1/19	MWC 313800-00	Workers' Compensation - Statutory Employers Liability - \$1,000,000 BI Each Accident \$1,000,000 BI Disease Each Employee \$1,000,000 BI Disease Policy Limit	12/31/2018
4	Storage Tank Liability	ACE American Insurance Company (Chubb)	St. Vincent Medical Center; Saint Louise Regional Hospital; Seton Medical Center; De Paul Urgent Care	10/1/18-10/1/19	UST G71182654 001	\$1,000,000 Per Storage Tank Incident \$1,000,000 Aggregate for ASTs \$1,000,000 Aggregate for USTs \$2,000,000 Aggregate Limit of Liability for All Storage Tank Incidents \$1,000,000 Aggregate Limit of Liability for Legal Defense Expenses \$3,000,000 Policy Aggregate	10/1/2019
5	Commercial Automobile	National Union Fire Insurance Company of Pittsburgh, PA (AIG)	Verity Health System of California, Inc.	10/1/18-10/1/19	087-15-98	\$1,000,000 Combined Single Limit	10/1/2019
6	Helipad Liability & Non-Owned Aircraft Liability	ACE Property and Casualty Insurance Company (Chubb)	Verity Health System of California, Inc.	10/1/18-10/1/19	AAP N17935550 001	\$10,000,000 Each Occurrence \$10,000,000 Products-Completed Operations Aggregate \$10,000,000 Personal Injury and Advertising Injury Aggregate \$10,000,000 Hangarkeepers Any One Occurrence \$10,000,000 Hangarkeepers Any One Aircraft \$10,000,000 Non-Owned Aircraft Liability Any One Occurrence	10/1/2019
7	Sexual Misconduct and Molestation Liability	Lloyds of London (Beazley Syndicates #2623/#623)	St. Francis Medical Center (Children's Counseling Center Agreement)	10/1/18-10/1/19	GLOPR180815	\$2,000,000 Any One Victim and in the Aggregate	10/1/2019
8	D&O Liability, Employment Practices Liability, Fiduciary Liability, Crime <i>Primary Layer</i>	National Union Fire Insurance Company of Pittsburgh, PA (AIG)	Verity Health System of California, Inc.	10/1/17-10/1/18 (Extended to 10/1/19)	02-359-65-60	\$10,000,000 D&O Liability and EPL (Shared) \$10,000,000 Fiduciary Liability \$10,000,000 Crime \$20,000,000 Policy Aggregate	10/1/2019



**Verity Health System of California, Inc.**  
**Summary of Insurance**  
**As of 11/30/18**



#	Insurance Coverage	Carrier	First Named Insured	Policy Period	Policy Number	Limits of Liability	Premium Paid Through (Date)
9	D&O Liability and Employment Practices Liability <i>1st Excess Layer</i>	Endurance Risk Solutions Assurance Company	Verity Health System of California, Inc.	10/1/17-10/1/18 (Extended to 10/1/19)	BLX10008286901	\$10,000,000 Excess of \$10,000,000	10/1/2019
10	D&O Liability Only <i>2nd Excess Layer</i>	Argonaut Insurance Company (ARGO Group)	Verity Health System of California, Inc.	10/1/17-10/1/18 (Extended to 10/1/19)	MLX 7602088-01	\$10,000,000 Excess of \$20,000,000 (D&O Liability Only)	10/1/2019
11	D&O Liability - Excess Side A Only	National Union Fire Insurance Company of Pittsburgh, PA (AIG)	Verity Health System of California, Inc.	10/1/18-19	02-306-61-90	\$2,000,000 Excess of \$30,000,000	10/1/2019
12	Punitive Damages Wrap <i>Primary Layer</i>	American International Reinsurance Company, Ltd.	Verity Health System of California, Inc.	10/1/17-10/1/18 (Extended to 10/1/19)	24542026	\$10,000,000 Each Occurrence \$10,000,000 Aggregate	10/1/2019
13	Punitive Damages Wrap <i>1st Excess Layer</i>	Magna Carta Insurance, Ltd.	Verity Health System of California, Inc.	10/1/17-10/1/18 (Extended to 10/1/19)	MCEN204155	\$10,000,000 Excess of \$10,000,000	10/1/2019
14	Storage Tank Liability	Tokio Marine Specialty Insurance Company (Philadelphia)	St. Francis Medical Center	12/05/17-12/05/18	STEP011394-00	\$1,000,000 Remediation Expense \$1,000,000 Bodily Injury and Property Damage Resulting from Contamination \$1,000,000 Defense Expense \$1,000,000 Defense Expense Aggregate \$2,000,000 Total Policy Aggregate	12/5/2018
15	General Liability	Illinois Union Insurance Company (Chubb)	St. Francis Medical Center (Lynwood Parking Agreement)	3/31/18-3/31/19	HPL G2181684A 011	\$1,000,000 Each Occurrence \$1,000,000 Personal Injury & Advertising Injury \$1,000,000 Products/Completed Operations Aggregate \$3,000,000 General Aggregate	3/31/2019

**Verity Health System of California, Inc.**  
**Summary of Insurance**  
**As of 11/30/18**



#	Insurance Coverage	Carrier	First Named Insured	Policy Period	Policy Number	Limits of Liability	Premium Paid Through (Date)
	<b>Physicians Professional Liability</b>						
16	Professional Liability	NORCAL Mutual Insurance Company	The Contracted Physicians of O'Connor Hospital	1/1/18-1/1/19	728814N	Per Scheduled Provider \$1,000,000 Each Claim; \$3,000,000 Aggregate	1/1/2019
17	Professional Liability	NORCAL Mutual Insurance Company	The Contracted Physicians of St. Francis Medical Center	1/1/18-1/1/19	728812N	Per Scheduled Provider \$1,000,000 Each Claim; \$3,000,000 Aggregate \$2,000,000 Each Claim; \$4,000,000 Aggregate	1/1/2019
	<b>Captive</b>						
18	Professional and General Liability	Marillac Insurance Company, Ltd.	Verity Health System of California, Inc.	3/31/18-3/31/19	DOC PLGL-26000-018	Professional Liability \$2,000,000 Each Claim and Aggregate Buffer Layer xs of \$3,000,000 Each Claim \$10,000,000 Aggregate General Liability \$2,000,000 Each Occurrence \$10,000,000 Aggregate	12/31/2018
19	Excess Professional and Umbrella Liability	Marillac Insurance Company, Ltd.	Verity Health System of California, Inc.	3/31/18-3/31/19	DOC XL PLGL-26000-018	Excess Professional Liability \$80,000,000 Each Occurrence \$80,000,000 Aggregate All Other Liability \$80,000,000 Each Claim \$80,000,000 Aggregate	3/31/2019
20	Workers Compensation Deductible Liability Protection	Marillac Insurance Company, Ltd.	Verity Health System of California, Inc.	7/1/18-7/1/19	DED.WC-07.01.18-19	Workers' Compensation \$500,000 Each Occurrence Employers Liability \$500,000 Each Occurrence	12/31/2018

**Verity Health System of California, Inc.**  
**Summary of Insurance**  
**As of 11/30/18**



#	Insurance Coverage	Carrier	First Named Insured	Policy Period	Policy Number	Limits of Liability	Premium Paid Through (Date)
	<b>Reinsurance</b>						
21	Lead Excess Layer	ACE American Insurance Company (Chubb)	Verity Health System of California, Inc.	3/31/18-3/31/19	RBN G21816838 011	\$15,000,000 Each Loss Event \$15,000,000 Aggregate Professional Liability \$15,000,000 Aggregate General Liability of Ceding Company Limits	3/31/2019
22	2nd Excess Layer	Continental Casualty Company (CNA)	Verity Health System of California, Inc.	3/31/18-3/31/19	HMU 2097462209	\$15,000,000 Each Claim \$15,000,000 Aggregate Professional Liability \$15,000,000 Aggregate General Liability Excess of Chubb Underlying Above	3/31/2019
23	3rd Excess Layer	Berkshire Hathaway Specialty Insurance Company	Verity Health System of California, Inc.	3/31/18-3/31/19	47-RHC-304968-01	\$20,000,000 Each Claim \$20,000,000 Aggregate Professional Liability \$20,000,000 Aggregate General Liability Excess of Chubb and CNA Underlying Above	3/31/2019
24	4th Excess Layer	Zurich American Insurance Company	Verity Health System of California, Inc.	3/31/18-3/31/19	HPC 0239123-00	\$10,000,000 Each Claim \$10,000,000 Aggregate Professional Liability \$10,000,000 Aggregate General Liability Excess of Chubb, CNA and Berkshire Underlying Above	3/31/2019
25	5th Excess Layer	The Medical Protective Company	Verity Health System of California, Inc.	3/31/18-3/31/19	XOL2018-023	\$20,000,000 Each Claim \$20,000,000 Aggregate Professional Liability \$20,000,000 Aggregate General Liability Excess of Chubb, CNA, Berkshire and Zurich Underlying Above	3/31/2019
	<b>Surety Bonds</b>						
26	CA DHS Patient Trust Bond	Hartford Fire Insurance Company	Seton Medical Center - Coastside	12/1/17-12/1/18	83BSBBF7598	\$75,000 Bond Amount	12/1/2018
27	CA DHS Patient Trust Bond	Hartford Fire Insurance Company	St. Francis Medical Center	12/1/18-12/1/19	83BSBBF7621	\$5,000 Bond Amount	12/1/2019
28	CA DHS Patient Trust Bond	Hartford Fire Insurance Company	St. Vincent Medical Center	12/1/17-12/1/18	83BSBBF7625	\$2,000 Bond Amount	12/1/2018
29	CA DHS Patient Trust Bond	Hartford Fire Insurance Company	Saint Louise Regional Hospital	12/1/17-12/1/18	83BSBBF7637	\$10,000 Bond Amount	12/1/2018
30	CA DHS Patient Trust Bond	Hartford Fire Insurance Company	O'Connor Hospital	12/1/17-12/1/18	83BSBBF7648	\$50,000 Bond Amount	12/1/2018
31	CA DHS Patient Trust Bond	Hartford Fire Insurance Company	Seton Medical Center	12/1/17-12/1/18	83BSBBF7661	\$35,000 Bond Amount	12/1/2018

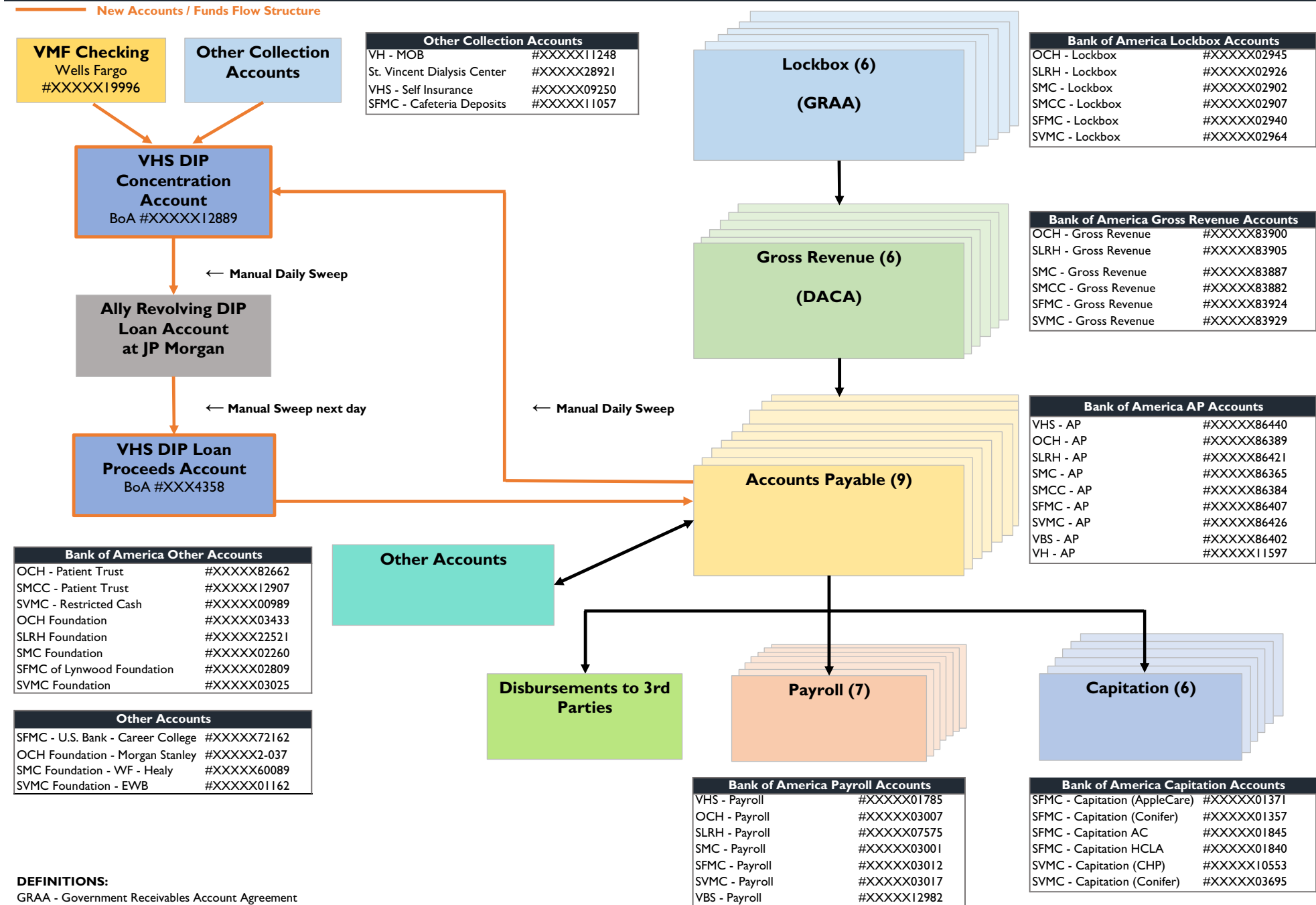
**Verity Health System of California, Inc.**  
**Summary of Insurance**  
**As of 11/30/18**



#	Insurance Coverage	Carrier	First Named Insured	Policy Period	Policy Number	Limits of Liability	Premium Paid Through (Date)
	<b>Provider Capitation Stop Loss (Managed Care Excess Loss)</b>						
32	Provider Capitation Stop Loss (Applicable to St. Vincent Medical Center and St. Francis Medical Center)	PartnerRe America Insurance Company	Verity Health System of California, Inc.	1/1/18-1/1/19	P0312544005	\$1,000,000 Maximum Benefit Per Covered Person 90% Payable in Excess of Specific Deductible if Complete Claim is Received by 2/1/20 50% Payable in Excess of Specific Deductible if Complete Claim is Not Received by 2/1/20 Transplant Services - 50% by a Non-Approved Transplant Network Provider	12/1/2018
	<b>Self-Insured Medical and Pharmacy Stop Loss</b>						
33	Self-Insured Medical and Pharmacy Stop Loss	Reliastar Life Insurance Company (Voya)	Verity Health System of California, Inc.	1/1/18-12/31/18	70037-7	\$325,000 per Individual Coverage Period - Incurred in 12 months 1/1/18 - 12/31/18 and paid in 24 months 1/1/18 - 12/31/19	12/1/2018

**Verity Health System - Debtors' Postpetition Cash Flowchart**

Current Structure as of November 30, 2018



**DEFINITIONS:**

GRAA - Government Receivables Account Agreement  
DACA - Deposit Account Control Agreement

**NOTE:** The current account structure and cash flow procedures as described above are subject to change based on ongoing negotiations with Ally Bank and other secured lenders.

**Verity Health System - Debtors' Postpetition Cash Flowchart**  
**Bank Accounts Closed Since the Petition Date as of November 30, 2018**

Accounts Closed in Nov 2018	
OCH - FSA	#XXXXXX12284
SLRH - FSA	#XXXXXX12307
SMC - FSA	#XXXXXX12289
SMCC - FSA	#XXXXXX12302
SFMC - FSA	#XXXXXX12487
SVMC - FSA	#XXXXXX12062
VBS - FSA	#XXXXXX13192
VH - Operating	#XXXXXX11970
VH - Savings	#XXXXXX11975

Other Accounts Closed	
SMC Foundation - TCB <sup>1</sup>	#XXXXXX8521
SMCC - Patient Trust - TCB <sup>2</sup>	#XXXXXX3611
VMF - Payroll ZBA - Wells Fargo <sup>3</sup>	#XXXXXX20010

<sup>1</sup> Account identified after petition date. This account was closed Oct 4 and funds were transferred to SMC-F at BoA.

<sup>2</sup> SMCC Patient Trust account at Tri-Counties Bank was closed in Sept 2018 and transferred to SMCC Patient Trust account at BoA.

<sup>3</sup> VMF Payroll ZBA at Wells Fargo was closed in December 2018.

**Verity Health System  
Debtor Bank Accounts  
As of 11/30/18**

<b>Number</b>	<b>Group</b>	<b>Bank Account Name</b>	<b>Company</b>	<b>Financial Institution</b>	<b>Account Number</b>	<b>Authorized Signers</b>
1	Obligated Group	VHS - AP	Verity Health System of California, Inc.	Bank of America	XXXXXX6440	Rich Adcock, CEO; Tony Armada, COO; Anita Chou, CFO; and Ty Conner, Treasurer
2	Obligated Group	VHS - Self Insurance	Verity Health System of California, Inc.	Bank of America	XXXXXX9250	Rich Adcock, CEO; Tony Armada, COO; Anita Chou, CFO; and Ty Conner, Treasurer
3	Obligated Group	VHS - Payroll	Verity Health System of California, Inc.	Bank of America	XXXXXX1785	Rich Adcock, CEO; Tony Armada, COO; Anita Chou, CFO; and Ty Conner, Treasurer
4	Obligated Group	VHS - DIP Concentration Account (formerly named Construction Escrow)	Verity Health System of California, Inc.	Bank of America	XXXXXX2889	Rich Adcock, CEO; Tony Armada, COO; Anita Chou, CFO; and Ty Conner, Treasurer
5	Obligated Group	VHS - DIP Loan Proceeds	Verity Health System of California, Inc.	Bank of America	XXXXXX4358	Rich Adcock, CEO; Tony Armada, COO; Anita Chou, CFO; and Ty Conner, Treasurer <b>(C)</b>
6	Obligated Group	OCH - Lockbox	O'Connor Hospital	Bank of America	XXXXXX2945	Rich Adcock, CEO; Tony Armada, COO; Anita Chou, CFO; and Ty Conner, Treasurer
7	Obligated Group	OCH - Gross Revenue	O'Connor Hospital	Bank of America	XXXXXX3900	Rich Adcock, CEO; Tony Armada, COO; Anita Chou, CFO; and Ty Conner, Treasurer
8	Obligated Group	OCH - AP	O'Connor Hospital	Bank of America	XXXXXX6389	Rich Adcock, CEO; Tony Armada, COO; Anita Chou, CFO; and Ty Conner, Treasurer
9	Obligated Group	OCH - Payroll	O'Connor Hospital	Bank of America	XXXXXX3007	Rich Adcock, CEO; Tony Armada, COO; Anita Chou, CFO; and Ty Conner, Treasurer
10	Obligated Group	OCH - Patient Trust	O'Connor Hospital	Bank of America	XXXXXX2662	Rich Adcock, CEO; Tony Armada, COO; Anita Chou, CFO; and Ty Conner, Treasurer
11	Obligated Group	SLRH - Lockbox	St. Louise Regional Hospital	Bank of America	XXXXXX2926	Rich Adcock, CEO; Tony Armada, COO; Anita Chou, CFO; and Ty Conner, Treasurer

**Verity Health System  
Debtor Bank Accounts  
As of 11/30/18**

<b>Number</b>	<b>Group</b>	<b>Bank Account Name</b>	<b>Company</b>	<b>Financial Institution</b>	<b>Account Number</b>	<b>Authorized Signers</b>
12	Obligated Group	SLRH - Gross Revenue	St. Louise Regional Hospital	Bank of America	XXXXXX3905	Rich Adcock, CEO; Tony Armada, COO; Anita Chou, CFO; and Ty Conner, Treasurer
13	Obligated Group	SLRH - AP	St. Louise Regional Hospital	Bank of America	XXXXXX6421	Rich Adcock, CEO; Tony Armada, COO; Anita Chou, CFO; and Ty Conner, Treasurer
14	Obligated Group	SLRH - Payroll	St. Louise Regional Hospital	Bank of America	XXXXXX7575	Rich Adcock, CEO; Tony Armada, COO; Anita Chou, CFO; and Ty Conner, Treasurer
15	Obligated Group	SFMC - Lockbox	St. Francis Medical Center	Bank of America	XXXXXX2940	Rich Adcock, CEO; Tony Armada, COO; Anita Chou, CFO; and Ty Conner, Treasurer
16	Obligated Group	SFMC - Gross Revenue	St. Francis Medical Center	Bank of America	XXXXXX3924	Rich Adcock, CEO; Tony Armada, COO; Anita Chou, CFO; and Ty Conner, Treasurer
17	Obligated Group	SFMC - AP	St. Francis Medical Center	Bank of America	XXXXXX6407	Rich Adcock, CEO; Tony Armada, COO; Anita Chou, CFO; and Ty Conner, Treasurer
18	Obligated Group	SFMC - Payroll	St. Francis Medical Center	Bank of America	XXXXXX3012	Rich Adcock, CEO; Tony Armada, COO; Anita Chou, CFO; and Ty Conner, Treasurer
19	Obligated Group	SFMC - Cafeteria Deposits	St. Francis Medical Center	Bank of America	XXXXXX1057	Rich Adcock, CEO; Tony Armada, COO; Anita Chou, CFO; and Ty Conner, Treasurer
20	Obligated Group	SFMC - Capitation (AppleCare)	St. Francis Medical Center	Bank of America	XXXXXX1371	Rich Adcock, CEO; Tony Armada, COO; Anita Chou, CFO; and Ty Conner, Treasurer; Eleanor Ramirez, SFMC CEO
21	Obligated Group	SFMC - Capitation (Conifer)	St. Francis Medical Center	Bank of America	XXXXXX1357	Rich Adcock, CEO; Tony Armada, COO; Anita Chou, CFO; and Ty Conner, Treasurer; Eleanor Ramirez, SFMC CEO
22	Obligated Group	SFMC - Capitation AC	St. Francis Medical Center	Bank of America	XXXXXX1845	Rich Adcock, CEO; Tony Armada, COO; Anita Chou, CFO; and Ty Conner, Treasurer; Eleanor Ramirez, SFMC CEO



**Verity Health System  
Debtor Bank Accounts  
As of 11/30/18**

Number	Group	Bank Account Name	Company	Financial Institution	Account Number	Authorized Signers
23	Obligated Group	SFMC - Capitation HCLA	St. Francis Medical Center	Bank of America	XXXXXX1840	Rich Adcock, CEO; Tony Armada, COO; Anita Chou, CFO; and Ty Conner, Treasurer; Eleanor Ramirez, SFMC CEO
24	Obligated Group	SFMC - Career College	St. Francis Medical Center	U S Bank	XXXXXX2162	Need to Update Signers (A)
25	Obligated Group	SVMC - Lockbox	St. Vincent Medical Center	Bank of America	XXXXXX2964	Rich Adcock, CEO; Tony Armada, COO; Anita Chou, CFO; and Ty Conner, Treasurer
26	Obligated Group	SVMC - Gross Revenue	St. Vincent Medical Center	Bank of America	XXXXXX3929	Rich Adcock, CEO; Tony Armada, COO; Anita Chou, CFO; and Ty Conner, Treasurer
27	Obligated Group	SVMC - AP	St. Vincent Medical Center	Bank of America	XXXXXX6426	Rich Adcock, CEO; Tony Armada, COO; Anita Chou, CFO; and Ty Conner, Treasurer
28	Obligated Group	SVMC - Payroll	St. Vincent Medical Center	Bank of America	XXXXXX3017	Rich Adcock, CEO; Tony Armada, COO; Anita Chou, CFO; and Ty Conner, Treasurer
29	Obligated Group	SVMC - Capitation (CHP)	St. Vincent Medical Center	Bank of America	XXXXXX0553	Rich Adcock, CEO; Tony Armada, COO; Anita Chou, CFO; and Ty Conner, Treasurer, Margaret Pfeiffer, SVMC COO
30	Obligated Group	SVMC - Capitation (Conifer)	St. Vincent Medical Center	Bank of America	XXXXXX3695	Rich Adcock, CEO; Tony Armada, COO; Anita Chou, CFO; and Ty Conner, Treasurer, Margaret Pfeiffer, SVMC COO
31	Obligated Group	SVMC - Restricted Cash	St. Vincent Medical Center	Bank of America	XXXXX00989	Rich Adcock, CEO; Tony Armada, COO; Anita Chou, CFO; and Ty Conner, Treasurer <b>(B)</b>
32	Obligated Group	SMC - Lockbox	Seton Medical Center	Bank of America	XXXXXX2902	Rich Adcock, CEO; Tony Armada, COO; Anita Chou, CFO; and Ty Conner, Treasurer
33	Obligated Group	SMC - Gross Revenue	Seton Medical Center	Bank of America	XXXXXX3887	Rich Adcock, CEO; Tony Armada, COO; Anita Chou, CFO; and Ty Conner, Treasurer

**Verity Health System  
Debtor Bank Accounts  
As of 11/30/18**

<b>Number</b>	<b>Group</b>	<b>Bank Account Name</b>	<b>Company</b>	<b>Financial Institution</b>	<b>Account Number</b>	<b>Authorized Signers</b>
34	Obligated Group	SMC - AP	Seton Medical Center	Bank of America	XXXXXX6365	Rich Adcock, CEO; Tony Armada, COO; Anita Chou, CFO; and Ty Conner, Treasurer
35	Obligated Group	SMC - Payroll	Seton Medical Center	Bank of America	XXXXXX3001	Rich Adcock, CEO; Tony Armada, COO; Anita Chou, CFO; and Ty Conner, Treasurer
36	Obligated Group	SMCC - Lockbox	Seton Medical Center	Bank of America	XXXXX02907	Rich Adcock, CEO; Tony Armada, COO; Anita Chou, CFO; and Ty Conner, Treasurer
37	Obligated Group	SMCC - Gross Revenue	Seton Medical Center	Bank of America	XXXXXX3882	Rich Adcock, CEO; Tony Armada, COO; Anita Chou, CFO; and Ty Conner, Treasurer
38	Obligated Group	SMCC - AP	Seton Medical Center	Bank of America	XXXXXX6384	Rich Adcock, CEO; Tony Armada, COO; Anita Chou, CFO; and Ty Conner, Treasurer
39	Obligated Group	SMCC - Patient Trust	Seton Medical Center	Bank of America	XXXXX12907	Rich Adcock, CEO; Tony Armada, COO; Anita Chou, CFO; and Ty Conner, Treasurer
40	Charitable Foundation	OCH Foundation	O'Connor Hospital Foundation	Bank of America	XXXXXX3433	Rich Adcock, CEO; Tony Armada, COO; Anita Chou, CFO; and Ty Conner, Treasurer <b>(B)</b>
41	Charitable Foundation	OCH Foundation - Investment	O'Connor Hospital Foundation	Morgan Stanley	XXXXX2-037	Ty Conner, Treasurer <b>(B)</b>
42	Charitable Foundation	SLRH Foundation	St. Louise Regional Hospital Foundation	Bank of America	XXXXXX2521	Rich Adcock, CEO; Tony Armada, COO; Anita Chou, CFO; and Ty Conner, Treasurer <b>(B)</b>
43	Charitable Foundation	SFMC of Lynwood Foundation	St. Francis Medical Center Foundation	Bank of America	XXXXXX2809	Rich Adcock, CEO; Tony Armada, COO; Anita Chou, CFO; and Ty Conner, Treasurer <b>(B)</b>
44	Charitable Foundation	SVMC Foundation	St. Vincent Medical Center Foundation	Bank of America	XXXXXX3025	Rich Adcock, CEO; Tony Armada, COO; Anita Chou, CFO; and Ty Conner, Treasurer <b>(B)</b>

**Verity Health System  
Debtor Bank Accounts  
As of 11/30/18**

<b>Number</b>	<b>Group</b>	<b>Bank Account Name</b>	<b>Company</b>	<b>Financial Institution</b>	<b>Account Number</b>	<b>Authorized Signers</b>	
45	Charitable Foundation	SVMC Foundation - EWB	St. Vincent Medical Center Foundation	EastWest Bank	XXXXXX1162	Rich Adcock, CEO; and Ty Conner, Treasurer	<b>(B)</b>
46	Non-Obligated Group	St. Vincent Dialysis Center	St. Vincent Dialysis Center	Bank of America	XXXXXX8921	Rich Adcock, CEO; Tony Armada, COO; Anita Chou, CFO; and Ty Conner, Treasurer	
47	Charitable Foundation	SMC Foundation	Seton Medical Center Foundation	Bank of America	XXXXXX2260	Rich Adcock, CEO; Tony Armada, COO; Anita Chou, CFO; and Ty Conner, Treasurer	<b>(B)</b>
48	Charitable Foundation	SMC Foundation - SVCS	Healy, James T/U/A	Wells Fargo	XXXXX60089	Need to Update Signers (A)	<b>(B)</b>
49	Non-Obligated Group	VBS - AP	Verity Business Services	Bank of America	XXXXXX6402	Rich Adcock, CEO; Tony Armada, COO; Anita Chou, CFO; and Ty Conner, Treasurer	
50	Non-Obligated Group	VBS - Payroll	Verity Business Services	Bank of America	XXXXXX2982	Rich Adcock, CEO; Tony Armada, COO; Anita Chou, CFO; and Ty Conner, Treasurer	
51	Physician Foundation	VMF - Checking	Verity Medical Foundation	Wells Fargo	XXXXXX9996	Steve Campbell, CEO; Randall Roisman, CFO; and Fariba Shahbazi, Tony Armada	
52	Non-Obligated Group	VH - AP	Verity Holdings LLC	Bank of America	XXXXXX1597	Rich Adcock, CEO; Tony Armada, COO; Anita Chou, CFO; and Ty Conner, Treasurer	
53	Non-Obligated Group	VH - MOB	Verity Holdings LLC	Bank of America	XXXXXX1248	Rich Adcock, CEO; Tony Armada, COO; Anita Chou, CFO; and Ty Conner, Treasurer	
<b>Bank Account Closed Since the Petition Date</b>							
54	Obligated Group	SMCC - Patient Trust - TCB	Seton Medical Center	Tri Counties Bank	XXXXXX3611	Ty Conner, Treasurer	
55	Obligated Group	OCH - FSA	O'Connor Hospital	Bank of America	XXXXXX2284	Rich Adcock, CEO; Tony Armada, COO; Anita Chou, CFO; and Ty Conner, Treasurer	

**Verity Health System  
Debtor Bank Accounts  
As of 11/30/18**

<b>Number</b>	<b>Group</b>	<b>Bank Account Name</b>	<b>Company</b>	<b>Financial Institution</b>	<b>Account Number</b>	<b>Authorized Signers</b>
56	Obligated Group	SLRH - FSA	St. Louise Regional Hospital	Bank of America	XXXXXX2307	Rich Adcock, CEO; Tony Armada, COO; Anita Chou, CFO; and Ty Conner, Treasurer
57	Obligated Group	SFMC - FSA	St. Francis Medical Center	Bank of America	XXXXXX2487	Rich Adcock, CEO; Tony Armada, COO; Anita Chou, CFO; and Ty Conner, Treasurer
58	Obligated Group	SVMC - FSA	St. Vincent Medical Center	Bank of America	XXXXXX2062	Rich Adcock, CEO; Tony Armada, COO; Anita Chou, CFO; and Ty Conner, Treasurer
59	Obligated Group	SMC - FSA	Seton Medical Center	Bank of America	XXXXXX2289	Rich Adcock, CEO; Tony Armada, COO; Anita Chou, CFO; and Ty Conner, Treasurer
60	Obligated Group	SMCC - FSA	Seton Medical Center	Bank of America	XXXXXX2302	Rich Adcock, CEO; Tony Armada, COO; Anita Chou, CFO; and Ty Conner, Treasurer
61	Non-Obligated Group	VBS - FSA	Verity Business Services	Bank of America	XXXXXX3192	Rich Adcock, CEO; Tony Armada, COO; Anita Chou, CFO; and Ty Conner, Treasurer
62	Non-Obligated Group	VH - Operating	Verity Holdings LLC	Bank of America	XXXXXX1970	Rich Adcock, CEO; Tony Armada, COO; Anita Chou, CFO; and Ty Conner, Treasurer
63	Non-Obligated Group	VH - Savings	Verity Holdings LLC	Bank of America	XXXXXX1975	Rich Adcock, CEO; Tony Armada, COO; Anita Chou, CFO; and Ty Conner, Treasurer
64	Physician Foundation	VMF - Payroll ZBA	Verity Medical Foundation	Wells Fargo	XXXXXX0010	Steve Campbell, CEO; Randall Roisman, CFO; and Fariba Shahbazi, Tony Armada

**Verity Health System  
Debtor Bank Accounts  
As of 11/30/18**

<b>Number</b>	<b>Group</b>	<b>Bank Account Name</b>	<b>Company</b>	<b>Financial Institution</b>	<b>Account Number</b>	<b>Authorized Signers</b>
<b>Bank Account Identified After the Petition Date (Closed 10/4/18)</b>						
65		SMC Foundation - TCB	Seton Medical Center Foundation	Tri Counties Bank	XXXXXX8521	Need to Update Signers (A) <b>(B)</b>

(A) Authorized signors are in process of being updated to current signors on the other Debtor accounts.

(B) This bank account contains certain funds that are donor restricted, and therefore, are not available for the Debtor's general operating activities.

Please refer to the attached Restricted Funds schedule for additional restricted funds recorded by the Debtors that are not included in this schedule of Debtor Bank Accounts as they are not part of the cash management program.

(C) New bank account opened in October 2018 to be used for DIP loan proceeds beginning in November 2018.

**Verity Health System, Inc.**  
**Restricted Funds Schedule**  
**At October 31, 2018 and November 30, 2018**  
\$ in 000's

No.	Debtor Name	Institution Name	Type of Account	Last 4 of A/C	10/31/2018 Balance	11/30/2018 Balance	Description of Restrictions
1R	Verity Health System of California	Wells Fargo	Checking (Restricted Funds)	0300	\$ 2,000	\$ 2,000	Escrow Account - funds held in trust under bond indenture; only trustee can authorize disbursements
2R	Verity Health System of California	Wells Fargo	Checking (Restricted Funds)	8703	20,799	20,834	Debt Reserve Account - funds held in trust under bond indenture; only trustee can authorize disbursements
3R	Verity Health System of California	Wells Fargo	Checking (Restricted Funds)	8803	803	804	Debt Reserve Account - funds held in trust under bond indenture; only trustee can authorize disbursements
4R	Verity Health System of California	Wells Fargo	Checking (Restricted Funds)	8903	885	886	Debt Reserve Account - funds held in trust under bond indenture; only trustee can authorize disbursements
5R	Verity Health System of California	Bank of America	Certificate of Deposit	n/a	125	125	Certificate of Deposit - Signatories are Rich Adcock, Anthony Armada, Anita Chou and Ty Connor
6R	St. Vincent Foundation	Green Oak Consulting Group	Endowment Fund (Restricted Funds)	a541a	2,990	3,061	Donor restricted funds controlled by third party; Debtor does not control disbursements from this account
7R	St. Vincent Medical Center	Northern Trust	Endowment Fund (Restricted Funds)	4098	1,774	1,778	Donor restricted funds controlled by third party; Debtor does not control disbursements from this account
8R	Seton Medical Center	Wilmington Trust	Checking - Restricted	7000	-	-	Escrow Account - funds held in trust under bond indenture; only trustee can authorize disbursements
9R	Seton Medical Center	Wilmington Trust	Checking - Restricted	7001	892	892	Escrow Account - funds held in trust under bond indenture; only trustee can authorize disbursements
10R	Seton Medical Center	Wilmington Trust	Checking - Restricted	7002	-	-	Escrow Account - only trustee can authorize disbursements to pay for seismic-related expenditures for Seton Medical Center.
11R	Seton Medical Center	Wilmington Trust	Checking - Restricted	7003	16,755	16,755	Escrow Account - funds held in trust under bond indenture; only trustee can authorize disbursements to pay for seismic related expenditures for Seton Medical Center.
12R	Seton Medical Center	Wilmington Trust	Checking - Restricted	7004	-	-	Escrow Account - only trustee can authorize disbursements to pay for seismic-related expenditures for Seton Medical Center.
13R	Seton Medical Center	Wilmington Trust	Checking - Restricted	7005	-	-	Escrow Account - only trustee can authorize disbursements to pay for seismic-related expenditures for Seton Medical Center.
14R	Seton Medical Center	Wilmington Trust	Checking - Restricted	7006	-	-	Escrow Account - only trustee can authorize disbursements to pay for seismic-related expenditures for Seton Medical Center.
15R	Seton Medical Center	Wilmington Trust	Checking - Restricted	7007	-	-	Escrow Account - only trustee can authorize disbursements to pay for seismic-related expenditures for Seton Medical Center.
16R	Seton Medical Center	Wilmington Trust	Checking - Restricted	1000	-	-	Escrow Account - funds held in trust under bond indenture; only trustee can authorize disbursements to pay for seismic related expenditures for Seton Medical Center.
17R	Seton Medical Center	Wilmington Trust	Checking - Restricted	1001	-	-	Escrow Account - only trustee can authorize disbursements to pay for seismic-related expenditures for Seton Medical Center.
18R	Seton Medical Center	Wilmington Trust	Checking - Restricted	1002	-	-	Escrow Account - only trustee can authorize disbursements to pay for seismic-related expenditures for Seton Medical Center.

**Verity Health System, Inc.**  
**Restricted Funds Schedule**  
**At October 31, 2018 and November 30, 2018**  
 \$ in 000's

No.	Debtor Name	Institution Name	Type of Account	Last 4 of A/C	10/31/2018 Balance	11/30/2018 Balance	Description of Restrictions
19R	Seton Medical Center	Wilmington Trust	Checking - Restricted	1003	17,625	17,625	Escrow Account - funds held in trust under bond indenture; only trustee can authorize disbursements to pay for seismic related expenditures for Seton Medical Center.
20R	Seton Medical Center	Wilmington Trust	Checking - Restricted	1004	-	-	Escrow Account - only trustee can authorize disbursements to pay for seismic-related expenditures for Seton Medical Center.
21R	Seton Medical Center	Wilmington Trust	Checking - Restricted	1005	-	-	Escrow Account - only trustee can authorize disbursements to pay for seismic-related expenditures for Seton Medical Center.
22R	Seton Medical Center	Wilmington Trust	Checking - Restricted	1006	-	-	Escrow Account - only trustee can authorize disbursements to pay for seismic-related expenditures for Seton Medical Center.
23R	Seton Medical Center	Wilmington Trust	Checking - Restricted	1007	-	-	Escrow Account - only trustee can authorize disbursements to pay for seismic-related expenditures for Seton Medical Center.

Attorney or Party Name, Address, Telephone & FAX Nos., State Bar No. & Email Address  Thomas J. Polis, Esq. (SBN 119326) POLIS & ASSOCIATES, APLC 19800 MacArthur Blvd., Suite 1000 Irvine, CA 92612 Tel: (949) 862-0040 Fax: (949) 862-0041 Email: tom@polis-law.com	FOR COURT USE ONLY  <div style="border: 1px solid black; padding: 10px; text-align: center;"> <p style="color: blue; font-weight: bold; font-size: 1.2em;">FILED &amp; ENTERED</p> <div style="border: 1px solid black; padding: 5px; margin: 5px auto; width: 80%;"> <p style="color: red; font-weight: bold; font-size: 1.5em;">NOV 19 2018</p> </div> <p style="color: blue; font-size: 0.8em;">CLERK U.S. BANKRUPTCY COURT                      Central District of California                      BY gonzalez DEPUTY CLERK</p> </div> <p style="color: red; font-weight: bold; font-size: 1.2em; margin-top: 10px;">CHANGES MADE BY COURT</p>
<b>UNITED STATES BANKRUPTCY COURT                  CENTRAL DISTRICT OF CALIFORNIA -<u>LOS ANGELES</u> DIVISION</b>	
In re:  Verity Health System of California, Inc.,  (Only Affects Related Debtor, St. Francis Medical Center, Inc., Case No. 2:18-bk-20165-ER)	CASE NO.: 2:18-bk-20151-ER CHAPTER: 11
Debtor(s).	<p style="font-weight: bold; margin: 0;">ORDER GRANTING MOTION FOR                  RELIEF FROM THE AUTOMATIC STAY                  UNDER 11 U.S.C. § 362                  (Action in Nonbankruptcy Forum)</p>
DATE: 11/7/2018 TIME: 10:00 a.m. COURTROOM: 1568 PLACE: US Bankruptcy Court 255 E. Temple Street Los Angeles, CA 90012	
<b>MOVANT: MARIA ZAVALA</b>	

1. The Motion was:     Opposed     Unopposed     Settled by stipulation

2. The Motion affects the following Nonbankruptcy Action:

Name of Nonbankruptcy Action: Maria Zavala and Florencio Zabala v. St. Francis Medical Center, et al.

Docket number: BC 681825

Nonbankruptcy court or agency where the Nonbankruptcy Action is pending:

Los Angeles Superior Court – Central District

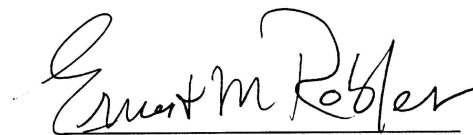


3. The Motion is granted under 11 U.S.C. § 362(d)(1).
4. As to Movant, its successors, transferees and assigns, the stay of 11 U.S.C. § 362(a) is:
  - a.  Terminated as to the Debtor and the Debtor's bankruptcy estate.
  - b.  Modified or conditioned as set forth in Exhibit \_\_\_\_\_ to the Motion.
  - c.  Annulled retroactively to the bankruptcy petition date. Any postpetition acts taken by Movant to enforce its remedies regarding the nonbankruptcy action do not constitute a violation of the stay.
5. **Limitations on Enforcement of Judgment:** Movant may proceed in the nonbankruptcy forum to final judgment (including any appeals) in accordance with applicable nonbankruptcy law. Movant is permitted to enforce its final judgment only by (*specify all that apply*):
  - a.  Collecting upon any available insurance in accordance with applicable nonbankruptcy law.
  - b.  Proceeding against the Debtor as to property or earnings that are not property of this bankruptcy estate.
6. This order is binding and effective despite any conversion of this bankruptcy case to a case under any other chapter of the Bankruptcy Code.
7.  The co-debtor stay of 11 U.S.C. § 1201(a) or § 1301(a) is terminated, modified or annulled as to the co-debtor, on the same terms and conditions as to the Debtor.
8.  The 14-day stay prescribed by FRBP 4001(a)(3) is waived.
9.  This order is binding and effective in any bankruptcy case commenced by or against the Debtor for a period of 180 days, so that no further automatic stay shall arise in that case as to the nonbankruptcy action.
10.  This order is binding and effective in any future bankruptcy case, no matter who the debtor may be, without further notice.
11.  Other (*specify*):

Pursuant to the Court's tentative on November 6, 2018 [Doc. No. 783], the Motion for Relief of Stay (action in Non-Bankruptcy Forum) is granted, however, the order granting the Motion shall not take effect until **January 15, 2019**.

###

Date: November 19, 2018



Ernest M. Robles  
United States Bankruptcy Judge